

3205/177-219 Mitchell Road Erskineville NSW

2  2  1 

Enjoy the convenience of this 114 sqm two bedroom apartment with the cosmopolitan lifestyle address that is Sydney Park Village. With refined renovations, this apartment is ideal for home owners or astute investors seeking a resort style feel coupled with high yields and low maintenance living.

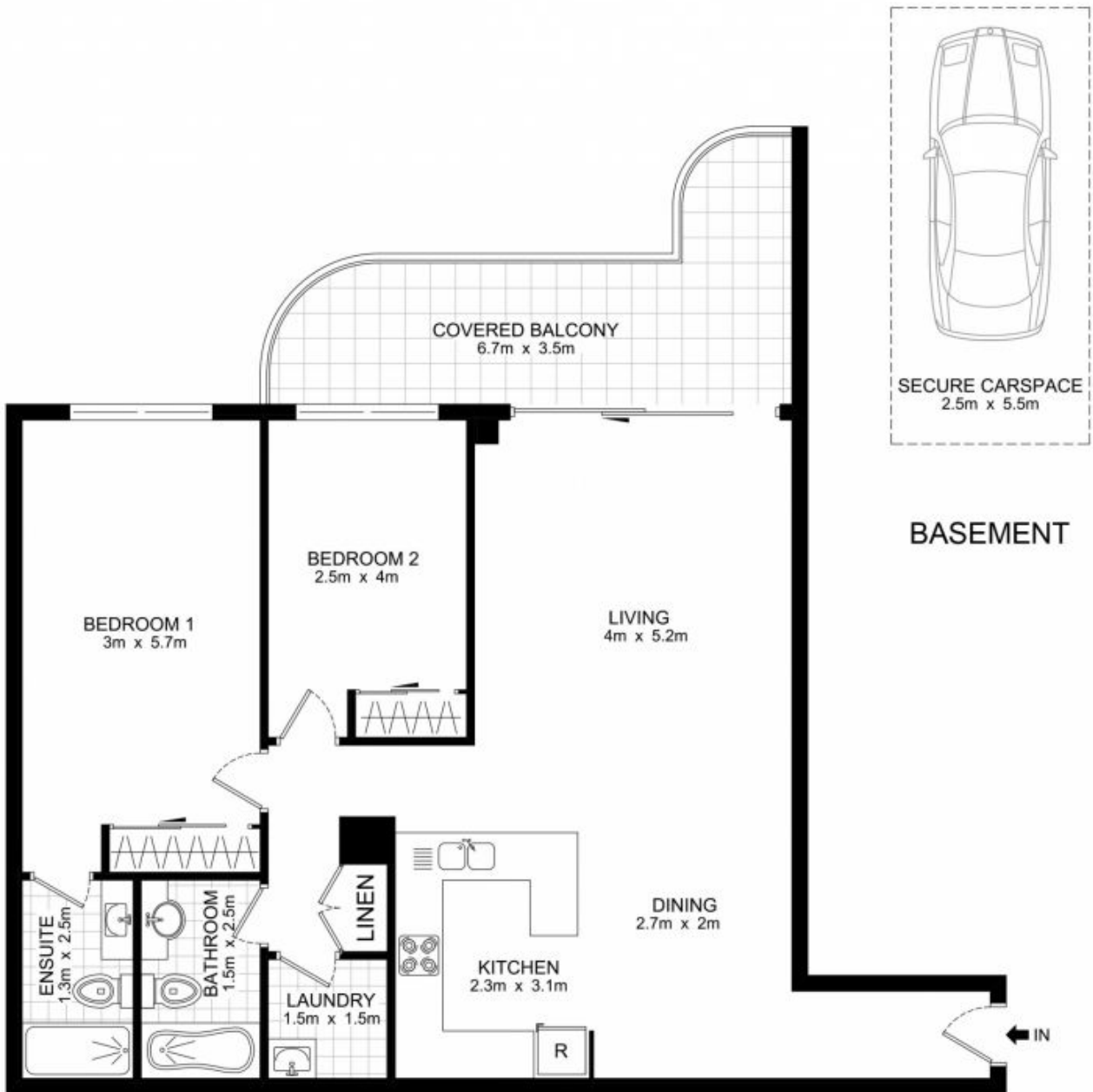
Open plan lounge & dining
Well-appointed gas kitchen w/ s/s appliances
Oversized main bedroom w/ BIR & ensuite bathroom
Second bedroom w/ BIR
Full main bathroom w/ tub & separate laundry
Intercom access
Secure underground car space

Type : Apartment
Price : \$ 790,000
View : <https://www.beaumccaffery.com.au/2698938>



Melissah McCaffery J P
02 9565 5333

[For full version visit the website](https://www.beaumccaffery.com.au)



BASEMENT

LEVEL 2

3205/177-219 Mitchell Road, Erskineville

DISCLAIMER: THIS PLAN IS FOR ILLUSTRATIVE PURPOSES ONLY. DIMENSIONS ARE APPROXIMATE AND IT DOES NOT CONSTITUTE PART OF ANY LEGAL DOCUMENTS.

