



**2316/8 Eve Street Erskineville NSW**

1  1 

Showcasing impressive floor to ceiling windows that effectively frame and fill the space with an abundance of natural light, this is not your average one bedroom apartment. Set within the 'Motto' complex designed by Allen Jack+Cottier Architects, this dual level home is the perfect opportunity to secure a slice of the ever popular inner west.

**Type** : Apartment  
**Price** : \$ 615,000  
**View** : <https://www.beaumccaffery.com.au/2978097>

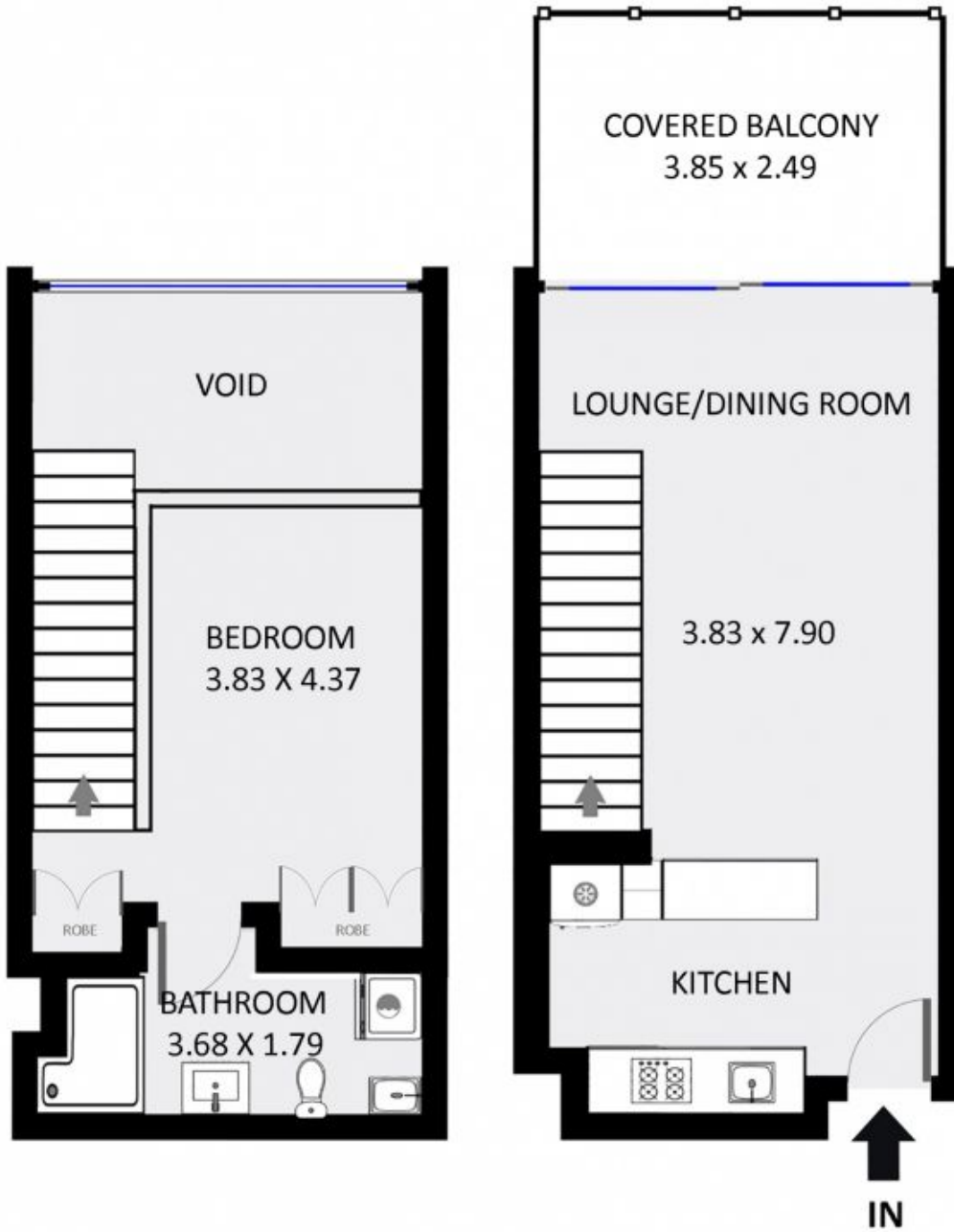
Designer full size gas kitchen w/ integrated appliances  
 Sun drenched living/dining w/ floor to ceiling windows  
 Warm, sun filled and covered entertainers terrace  
 Mezzanine level w/ double bedroom and double built-in  
 Modern full bathroom w/ laundry facilities



**Melissah McCaffery J P**  
 02 9565 5333

Motto boasts excellent convenience being walking distance

[For full version visit the website](https://www.beaumccaffery.com.au)



**UPPER LEVEL**

**LEVEL THREE**



0.0 0.5 1.0 1.5 2.0 2.5m  
1:58

**2316/8 Eve Street, Erskineville**