



**17408/177-219 Mitchell Road Erskineville NSW**

1  1  1 

This one bedroom plus study apartment encompasses the essence and convenience of urban living. Boasting resort style facilities, close proximity to transport links and inner west charm, this city fringe pad offers a rare opportunity to purchase in this tightly held complex.

**Type** : Apartment

**Price** : \$ 673,000

**View** : <https://www.beaumccaffery.com.au/3191349>

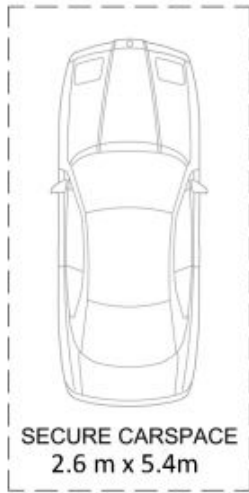
Versatile open plan living & dining area  
Well-appointed gas kitchen w/ s/s appliances  
Sun drenched bedroom w/ BIR & balcony access  
Separate study area perfect for home office  
Stylish bathroom w/ tub & internal laundry  
North facing entertainers balcony w/ private leafy outlook  
Security car space, visitor parking & 24/7 on-site security



**Michael McCaffery**  
**02 9565 5333**

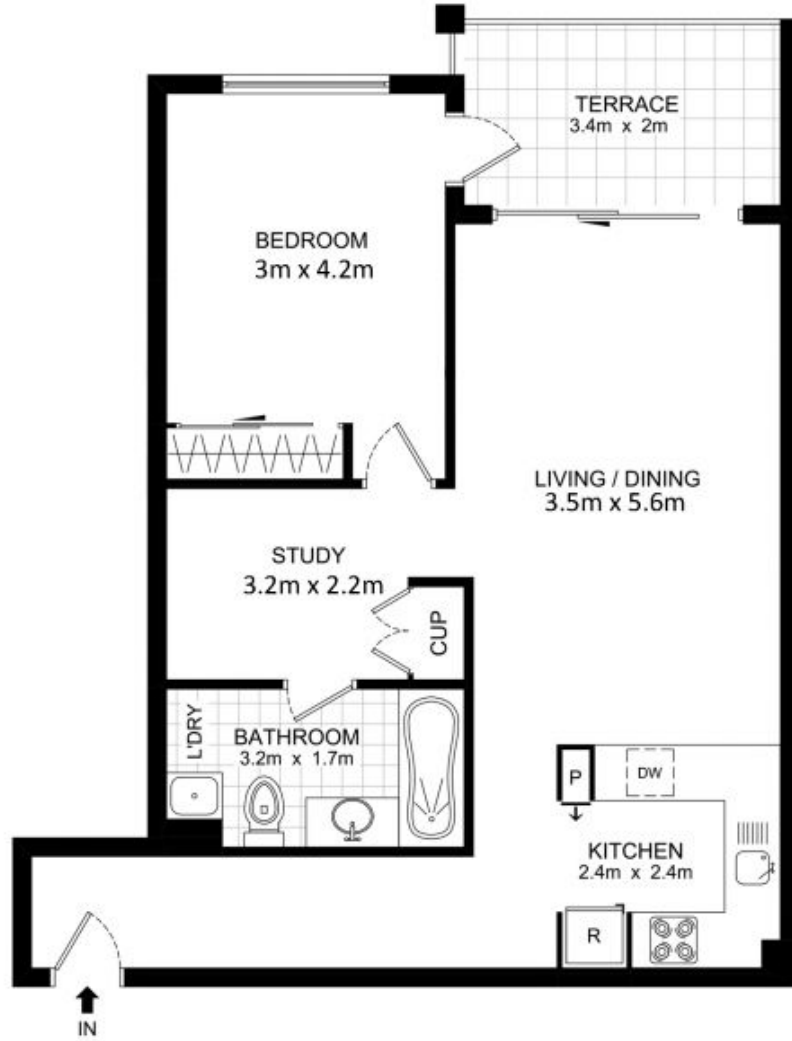
Placed just steps from the hip Erskineville Village, the eat

[For full version visit the website](#)



SECURE CARSPACE  
2.6 m x 5.4m

BASEMENT



LEVEL FOUR



17408 / 177-219 Mitchell Road, Erskineville



DISCLAIMER: THIS PLAN IS FOR ILLUSTRATIVE PURPOSES ONLY. DIMENSIONS ARE APPROXIMATE AND IT DOES NOT CONSTITUTE PART OF ANY LEGAL DOCUMENTS. DIMENSIONS ARE APPROXIMATE AND IT DOES NOT CONSTITUTE PART OF ANY LEGAL DOCUMENTS.