



10501/177-219 Mitchell Road Erskineville NSW

2  2  1 

Located amongst the exemplary gardens of one of the best complexes in Sydney's inner west, this apartment offers the perfect synthesis of the vibrancy of Erskineville & resort style living. With the most highly sought after aspect in the complex, this apartment is perched high on the 5th floor and offers 111sqm of low maintenance, comfortable living & entertaining space.

Sunny internal facing balcony enjoying views of the complex gardens & facilities
Two double bedrooms, master w/ walk in robe & ensuite
Mosaic tiled bathroom w/ bathtub
Open plan gas kitchen w/ s/s appliances including dishwasher
Separate Internal laundry w/ dryer

Type : Apartment

Price : \$ 0

View : <https://www.beaumccaffery.com.au/3257410>



Melissah McCaffery J P
02 9565 5333

[For full version visit the website](https://www.beaumccaffery.com.au)

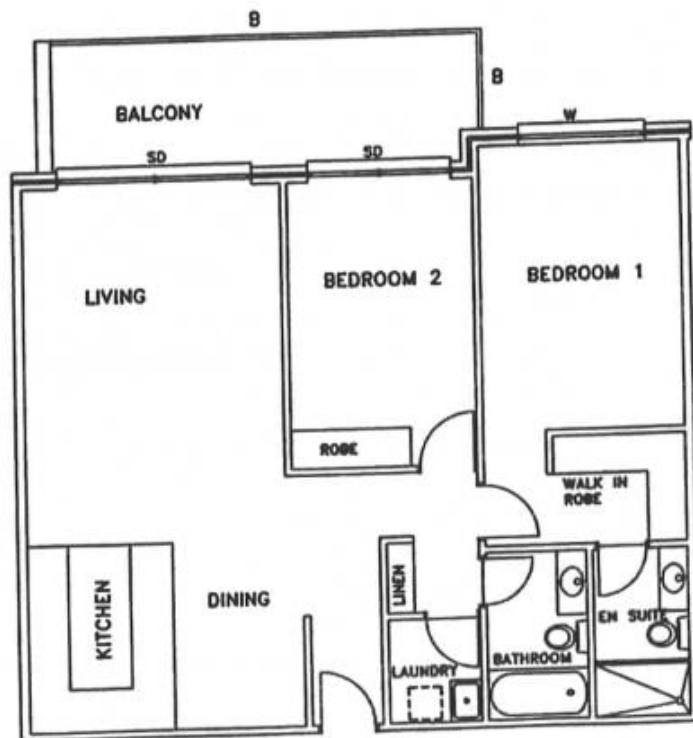
SYDNEY PARK VILLAGE PARKVIEW TOWERS

117-219 MITCHELL ROAD
ALEXANDRIA
SYDNEY NSW AUSTRALIA



2 BEDROOM
APARTMENT
10-501

STRATA # 57



THIS PLAN SHOULD BE READ IN CONJUNCTION
WITH THE CONTRACT FOR SALE INCLUDING BUT
NOT LIMITED TO THE SCHEDULE OF FINISHES AND
ADDITIONAL CONDITIONS 23, 26, 27 AND 43.3

SALES PLAN
SPV4: 10-501
ISSUE: C
DATED: 20/6/1999