

**17511/177-219 Mitchell Road Erskineville NSW**

1  1  1 

This internal facing one bedroom plus study apartment of oversized proportions offers a versatile, open plan layout w/ a generous sized balcony, perfect for entertaining & relaxing in privacy.

**Type** : Apartment

**Price** : \$ 725,000

**View** : <https://www.beaumccaffery.com.au/3283615>

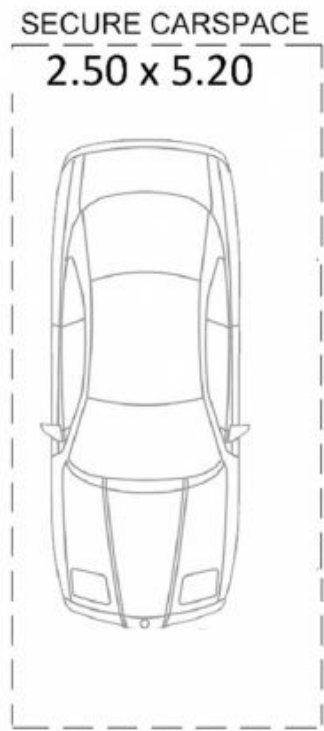
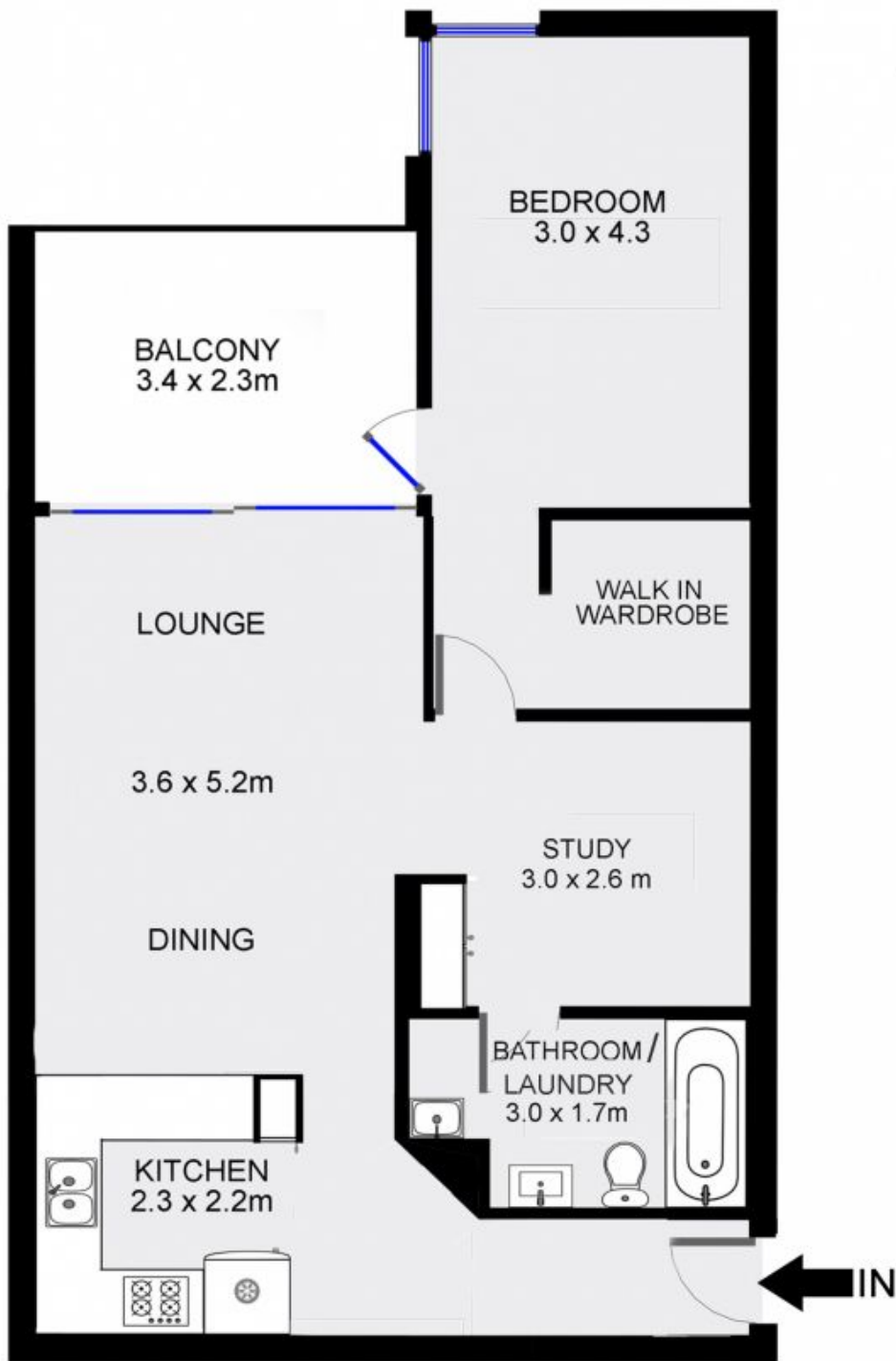
Modern gas kitchen w/ s/s appliances  
 Spacious open plan lounge & dining w/ AC  
 Bedroom w/ walk in robe & balcony access  
 Separate study, perfect for home office or nursery  
 Full bathroom w/ integrated laundry facilities  
 Good sized entertainers balcony w/ leafy outlook  
 Secure undercover car space & ample visitor parking  
 Intercom access & 24 hour on-site security



**Melissah McCaffery J P**  
**02 9565 5333**

Placed just steps from the hip Erskineville Village, the eat

[For full version visit the website](https://www.beaumccaffery.com.au)



## FIFTH FLOOR

17511/177-219 Mitchell Road, Erskineville

