




148 Livingstone Road Marrickville NSW

4  2  2 

A rare opportunity to acquire a character filled 1880s home in a central Marrickville location. With a commanding street presence and grand beauty of era, this four bedroom residence currently presented as 2 dwellings can easily be reverted back to a palatial family home, redesigned to create your personal masterpiece or redeveloped STCA. Set on 2 separate lots with a total area of 828.1m2 the potential is endless.

Lot 1 DP 119160 = 297m2

Lot 6 DP 2678 = 531.1m2

Period home with light filled living & dining areas

Original floorboards & timber architectural features

Soaring 12ft high ceilings & ornate detail throughout

4 generous bedrooms, featuring elegant bay windows

Type : House

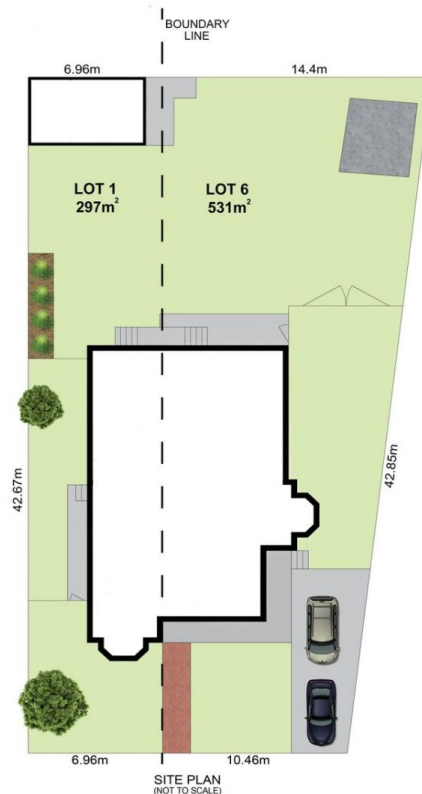
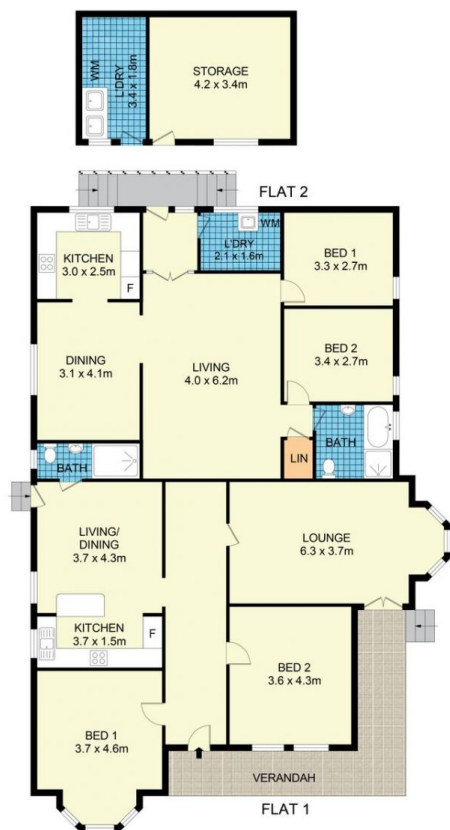
Land Size : 828.1 sqm

View : <https://www.beaumccaffery.com.au/5182308>



Michael McCaffery
02 9565 5333

[For full version visit the website](https://www.beaumccaffery.com.au)



148 Livingstone Road, Marrickville

Disclaimer

Floor Plan measurements are approximate and are for illustrative purposes only. While we cannot doubt the floor plans accuracy, we make no guarantee, warranty or representation as to the accuracy and completeness of the floor plan.