

9203/177-219 Mitchell Road Erskineville NSW

1  1  1 

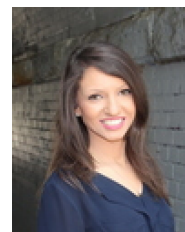
Nestled amid the oasis-like gardens and resort style enclave of Sydney Park Village, this North facing apartment features an open plan layout with light filled interiors and secure parking - the ideal first home or lucrative investment.

Type : Apartment
Land Size : 72 sqm
View : <https://www.beaumccaffery.com.au/5356243>

Open plan living & dining w/ air-con leads onto the entertainer's balcony
 Master bedroom w/ mirrored BIR
 Well-appointed gas kitchen w/ s/s appliances & storage
 Main bathroom w/ tub & laundry facilities
 Secure undercover parking & ample visitor parking
 Intercom access & 24 hour on-site security



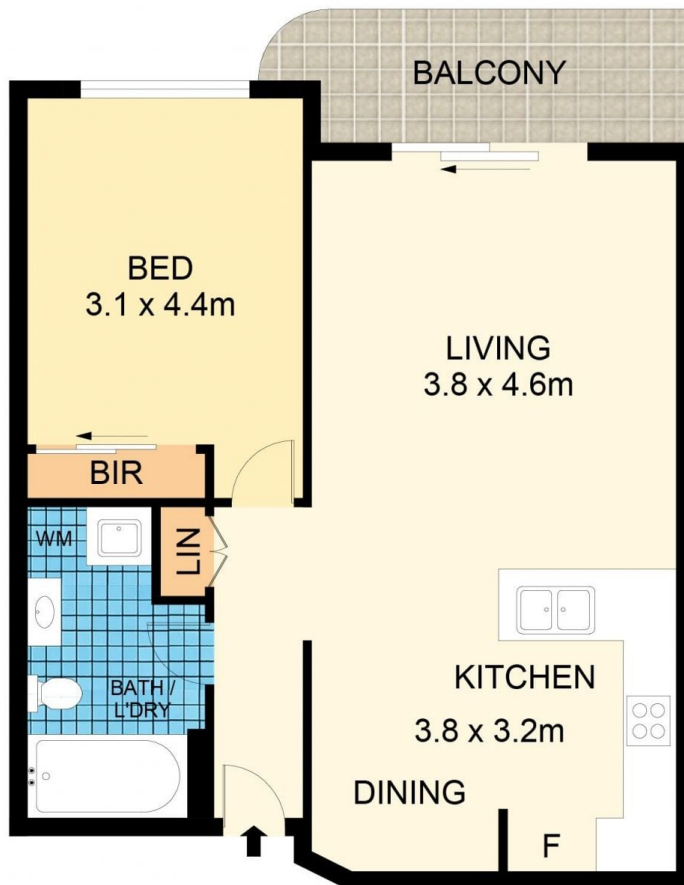
Michael McCaffery
02 9565 5333



Rebecca Voncina
02 9565 5333

Sitting on the fringe of Sydneys inner west and inner city,

[For full version visit the website](https://www.beaumccaffery.com.au)



9203/177-219 Mitchell Road, Erskineville



Disclaimer

Floor Plan measurements are approximate and are for illustrative purposes only. While we cannot doubt the floor plans accuracy, we make no guarantee, warranty or representation as to the accuracy and completeness of the floor plan.