



16206/177-219 Mitchell Road Erskineville NSW

1  1  1 

This desirable North facing apartment, opposite to Sydney Park delivers the essence of inner-city living within tranquil surrounds, offering a generous entertainer's balcony with a private outlook. The ideal first home or investment for the savvy opportunist.

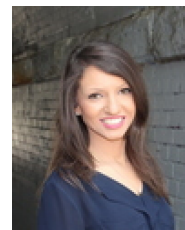
Type : Apartment

View : <https://www.beaumccaffery.com.au/5369780>

Generous open plan living & dining area
North facing entertainer's balcony w/ lush green outlook
Light filled master bedroom w/ BIR
Well-appointed gas kitchen w/ s/s appliances & storage
Bathroom w/ tub & laundry facilities
Separate study area perfect for home office, nursery or cellar
Secure undercover parking & ample visitor parking
Intercom access & 24 hour on-site security



Melissah McCaffery J P
02 9565 5333



Rebecca Voncina
02 9565 5333

[For full version visit the website](https://www.beaumccaffery.com.au)