

177-219 Mitchell Road Erskineville NSW

1  1  1 

This attractive park-side haven delivers the essence of inner-city living within tranquil surrounds, offering 74 sqm on title and a generous entertainer's balcony with park views. The ideal first home or lucrative investment for the savvy opportunist.

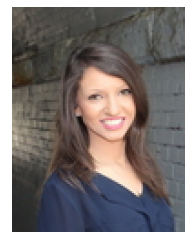
Type : Apartment
Land Size : 74 sqm
View : <https://www.beaumccaffery.com.au/5566960>

- Open plan living & dining area
- Covered entertainers' balcony w/ park views
- Well-appointed gas kitchen w/ s/s appliances
- Spacious light filled master bedroom w/ BIR
- Bathroom w/ tub & internal laundry
- Secure car space, lift access and visitor parking

Sitting on the fringe of Sydney's inner west and inner city, Erskineville is a hipster's enclave that has all the trimmings

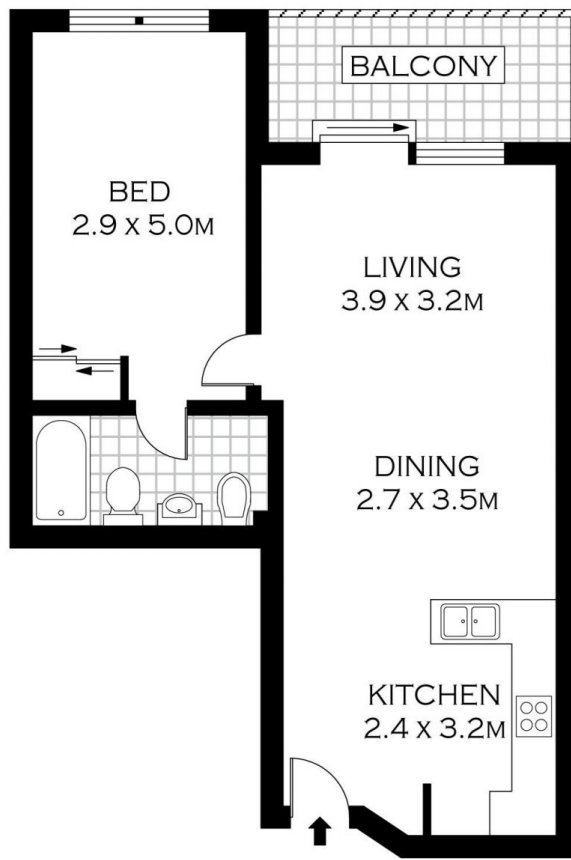
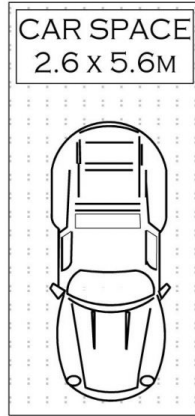


Melissah McCaffery J P
02 9565 5333



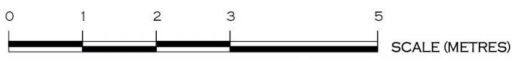
Rebecca Voncina
02 9565 5333

[For full version visit the website](https://www.beaumccaffery.com.au)



LEVEL FOUR

NOTE :- SECURE CAR SPACE



PLANS SHOWN ONLY INDICATIVE OF LAYOUT. DIMENSIONS ARE APPROXIMATE.
FLOOR PLANS BY WWW.REALESTATEMARKETINGAUSTRALIA.COM.AU
REF. No: 5701

3407/177-219 Mitchell Road, ERSKINEVILLE