



18508/177-219 Mitchell Road Erskineville NSW

2  2  2 

Set within the lush green surrounds of Sydney Park Village, this two bedroom apartment + study has a generous 143 sqm on title. Showcasing an open plan living/dining area separating the bedrooms and bathrooms, enjoy desirable city views from the balcony, two secure parking spots + utmost convenience of the inner west with multiple transport options right at your doorstep.

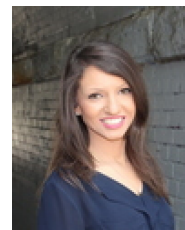
Type : Apartment
Price : \$ 1,080,000
Land Size : 143 sqm
View : <https://www.beaumccaffery.com.au/5578267>

Spacious living/dining area w/ entertainers' balcony w/ city views
 Well-appointed gas kitchen w/ new dishwasher & plenty of storage
 Master bedroom w/ double BIR, en-suite w/ separate bath tub & balcony access
 Generous second bedroom w/ BIR & leafy outlook

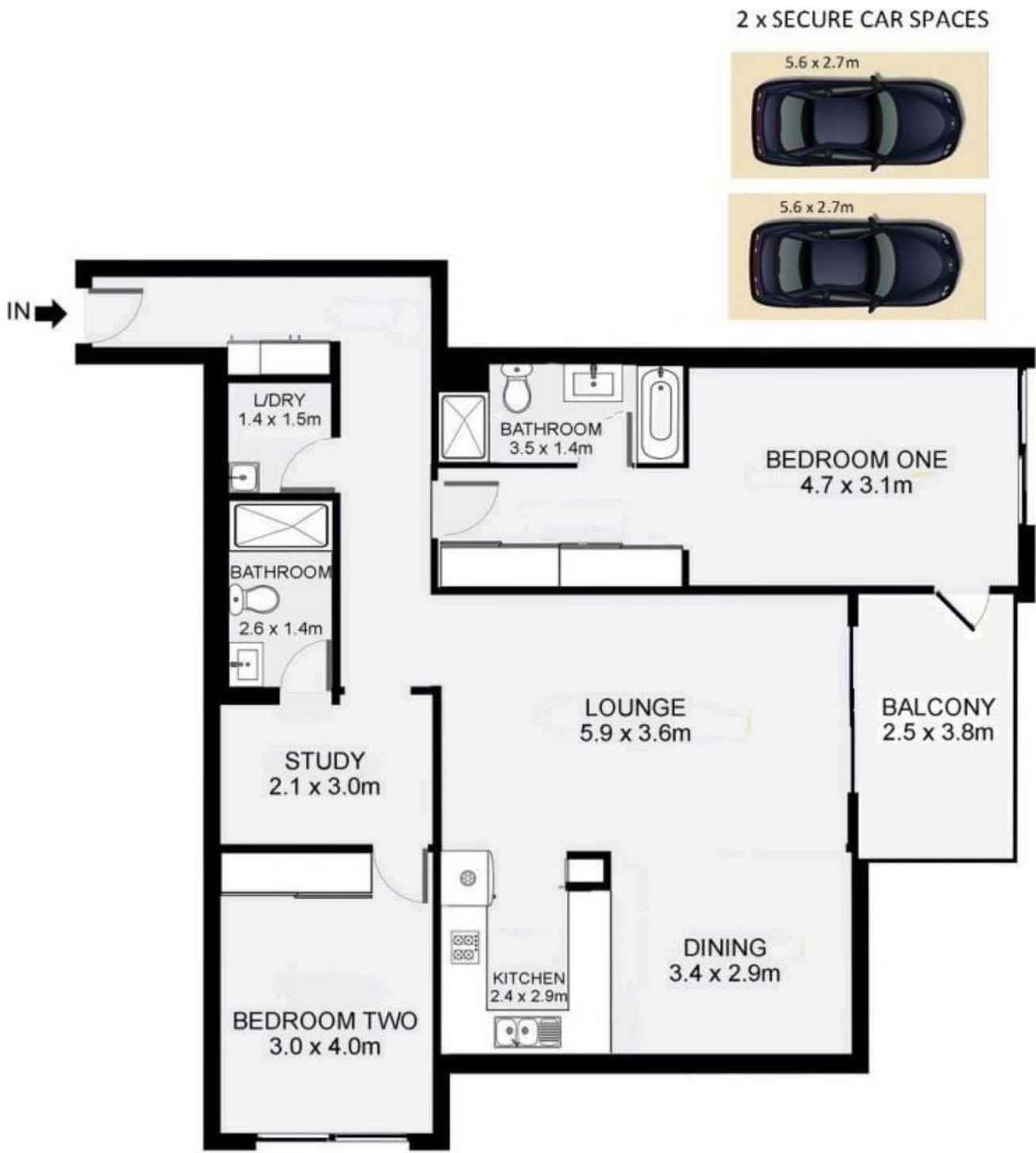
[For full version visit the website](https://www.beaumccaffery.com.au)



Michael McCaffery
02 9565 5333



Rebecca Voncina
02 9565 5333



FIFTH FLOOR

18508/177-219 Mitchell Road, Erskineville



Disclaimer

Floor Plan measurements are approximate and are for illustrative purposes only. While we cannot doubt the floor plans accuracy, we make no guarantee, warranty or representation as to the accuracy and completeness of the floor plan.