

17311/177-219 Mitchell Road Erskineville NSW

1  1  1 

Set within the lush-green surrounds of Sydney Park Village, this one bedroom apartment with study and parking has an impressive 83 sqm on title. Featuring an open plan layout and serene outlook inspires a promising yet effortless inner city lifestyle.

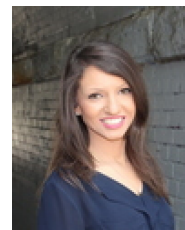
Generous open plan living & dining area w/ air conditioning
Well-appointed gas kitchen w/ s/s appliances & storage
Generous entertainers balcony w/ complex views
Over-sized bedroom w/ WIR & balcony access
Main bathroom w/ tub & laundry facilities
Separate study area perfect for home office
Secure undercover parking w/ storage box & ample visitor parking
Intercom access & 24 hour on-site security

[For full version visit the website](https://www.beaumccaffery.com.au)

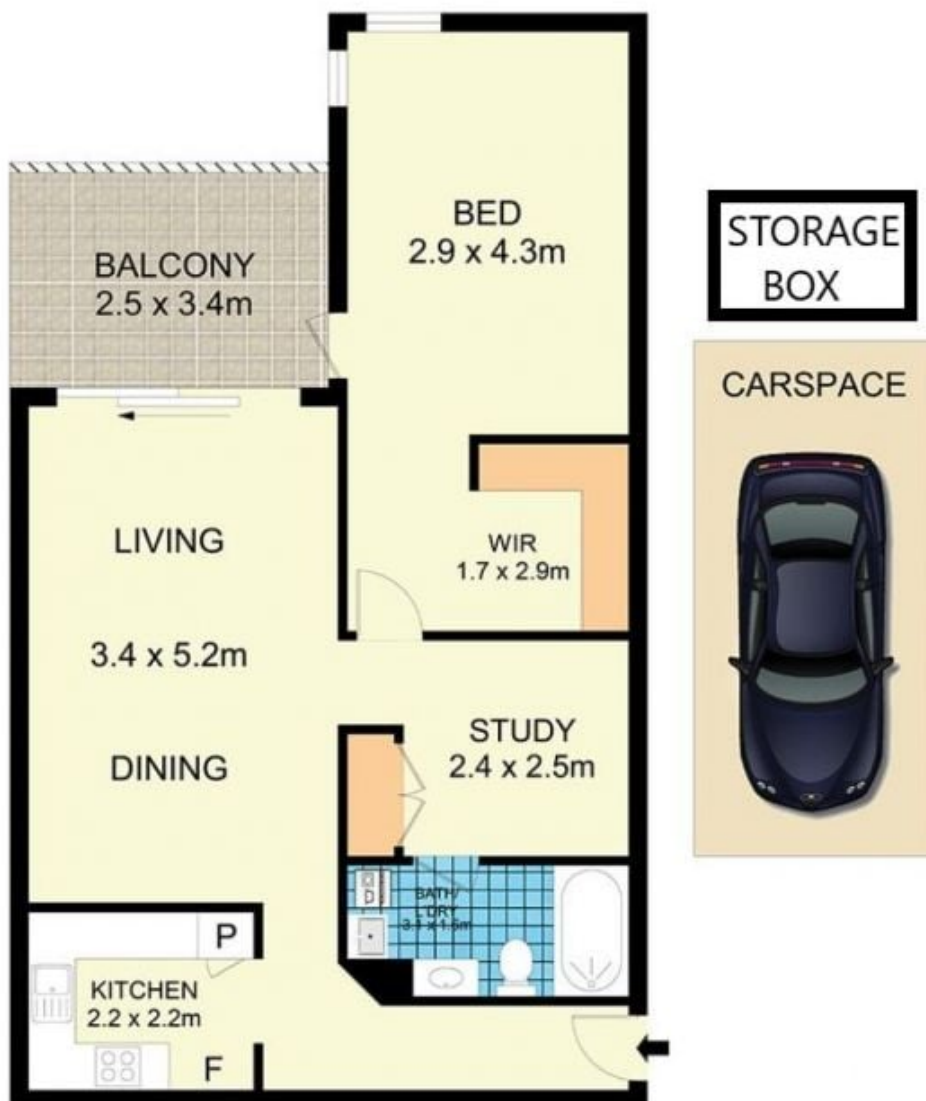
Type : Apartment
Price : \$ 735,000
Land Size : 83 sqm
View : <https://www.beaumccaffery.com.au/5618813>



Melissah McCaffery J P
02 9565 5333



Rebecca Voncina
02 9565 5333



17311/177-219 Mitchell Road, Erskineville

Disclaimer

Floor Plan measurements are approximate and are for illustrative purposes only. While we cannot doubt the floor plans accuracy, we make no guarantee, warranty or representation as to the accuracy and completeness of the floor plan