






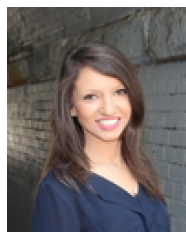
**11302/177-219 Mitchell Road Erskineville NSW**

2  2  1 

This North facing apartment has 124 sqm on title, positioned on the third floor and has a desirable outlook of the lush gardens of Sydney Park Village - perfect for young professionals or investors alike

**Type** : Apartment  
**Land Size** : 124 sqm  
**View** : <https://www.beaumccaffery.com.au/5636384>

Open plan living & dining area  
 North facing entertainers balcony w/ complex views  
 Well-appointed gas kitchen w/ s/s appliances  
 Light filled master bedroom w/ WIR, ensuite & balcony access  
 Spacious second bedroom w/ BIR  
 Separate internal laundry & plenty of storage  
 Secure undercover parking & ample visitor parking  
 Intercom access & 24 hour on-site security

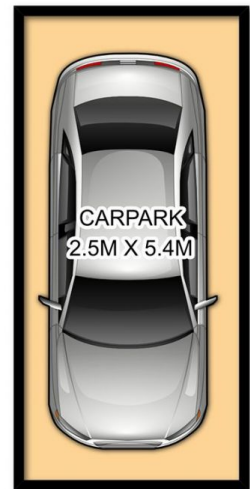
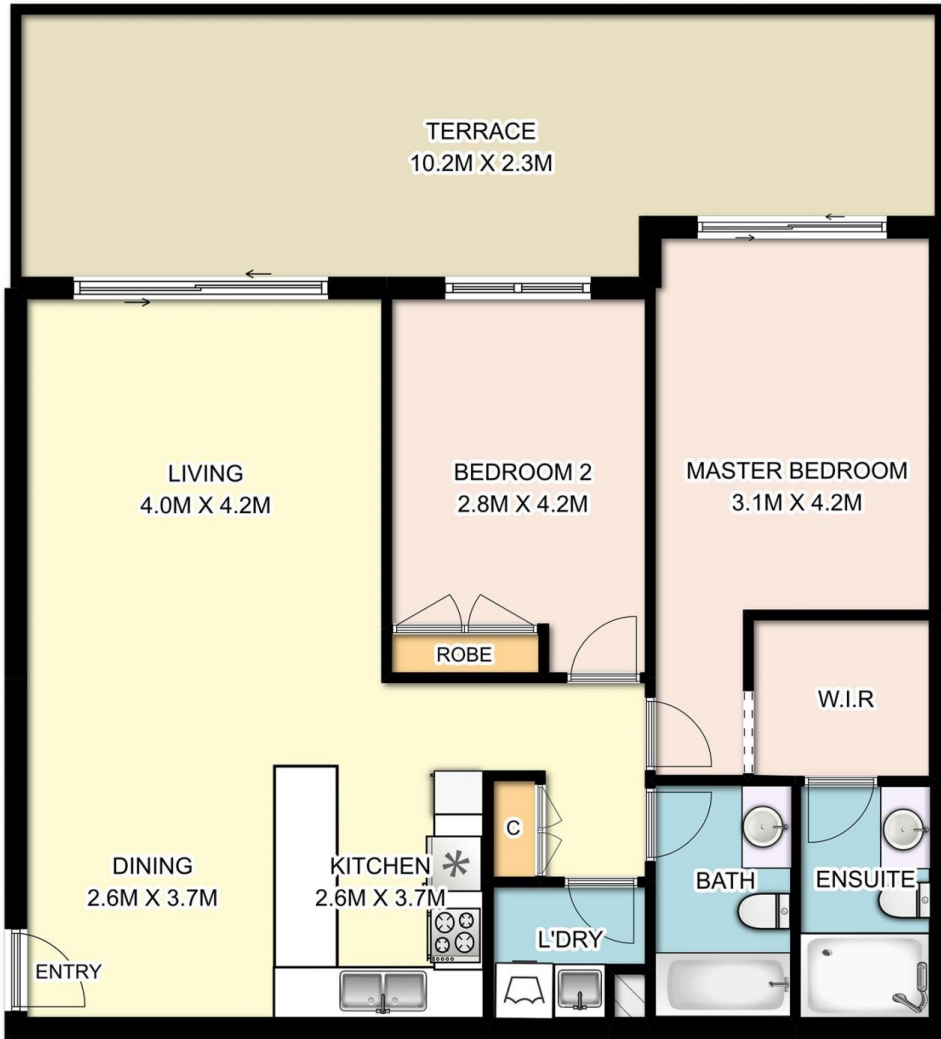


**Rebecca Voncina**  
02 9565 5333



**Melissah McCaffery J P**  
02 9565 5333

[For full version visit the website](https://www.beaumccaffery.com.au)



## 11302 / 177-219 Mitchell Road, Erskineville

DISCLAIMER: SYDRealEstatePhoto accepts no liability for the accuracy of details contained within our floor plans. The plan scale in meters. Indicative only. Dimensions are approximate. All information contained here in is gathered from sources we believe to be reliable. However we cannot guarantee its accuracy and interested persons should rely on their own enquiries.