

6301/177-219 Mitchell Road Erskineville NSW

1  1  1 

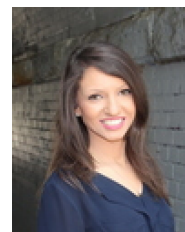
Nestled amid the oasis-like gardens of Sydney Park Village, this one bedroom apartment features an open plan layout with light filled interiors and recently renovated throughout - with nothing to spend, perfectly suited for first home buyers or investors alike.

Type : Apartment
Land Size : 56 sqm
View : <https://www.beaumccaffery.com.au/569274>
 1

Open plan living & dining area
 Covered private balcony w/ leafy outlook
 New gas kitchen w/ s/s appliances & storage
 Main bedroom w/ mirrored BIR
 New bathroom & separate laundry
 Secure undercover parking & ample visitor parking
 Intercom access & 24 hour on-site security
 Currently rented @ \$620/w

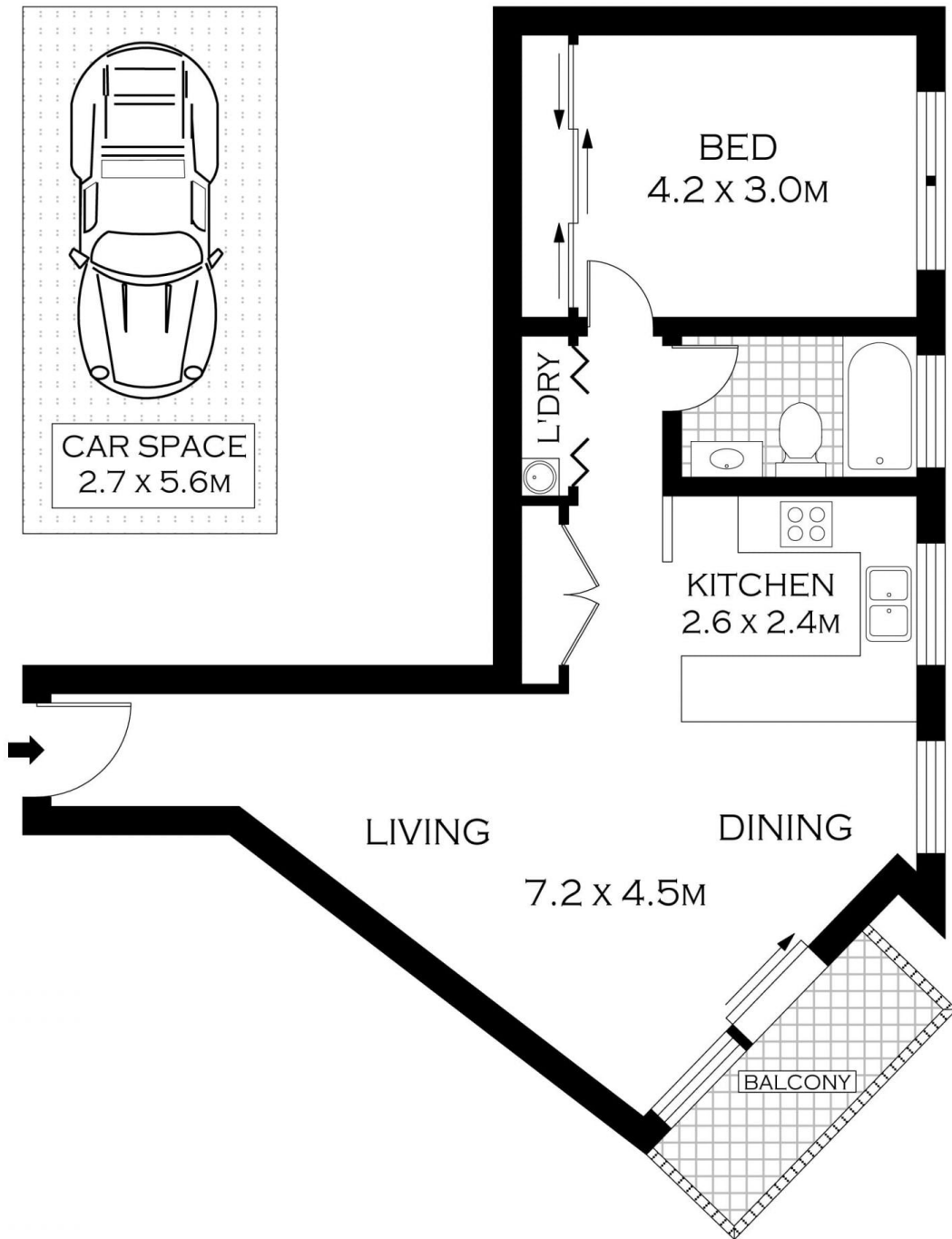


Melissah McCaffery J P
 02 9565 5333

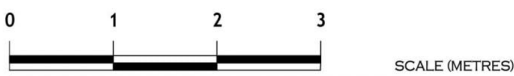


Rebecca Voncina
 02 9565 5333

[For full version visit the website](https://www.beaumccaffery.com.au)



LEVEL THREE



PLANS SHOWN ONLY INDICATIVE OF LAYOUT. DIMENSIONS ARE APPROXIMATE.
 Floor plans by www.realestatemarketingaustralia.com.au
 Ref. No: 7280



6301 / 177-219 MITCHELL ROAD

ERSKINEVILLE