



12506/177-219 Mitchell Road Erskineville NSW

1  1  1 

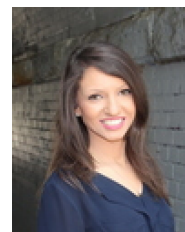
This desirable North facing apartment delivers the essence of inner-city living within tranquil surrounds, offering 78 sqm on title and a generous entertainer's balcony w/ internal complex views. The ideal first home or lucrative investment for the savvy opportunist.

Type : Apartment
Land Size : 78 sqm
View : <https://www.beaumccaffery.com.au/5703343>

Open plan living & dining area
 North facing balcony w/ internal complex views
 Well-appointed gas kitchen w/ s/s appliances & storage
 Light filled master bedroom w/ BIR
 Separate study area perfect for home office
 Stylish bathroom w/ tub & laundry facilities
 Secure undercover parking & ample visitor parking
 Intercom access & 24 hour on-site security



Melissah McCaffery J P
02 9565 5333



Rebecca Voncina
02 9565 5333

[For full version visit the website](https://www.beaumccaffery.com.au)



12506/177-219 Mitchell Road, Erskineville

Disclaimer

Floor Plan measurements are approximate and are for illustrative purposes only. While we cannot doubt the floor plans accuracy, we make no guarantee, warranty or representation as to the accuracy and completeness of the floor plan.