



13207/177-219 Mitchell Road Erskineville NSW

1  1  1 

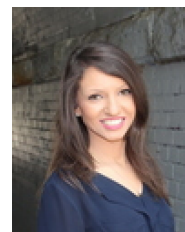
Set amid the lush green surrounds of Sydney Park Village, this generous 91 sqm apartment features an open plan layout w/ light filled interiors, new paint + new hard flooring throughout - the ideal first home or investment opportunity located in a convenient inner-city suburb.

Type : Apartment
Land Size : 91 sqm
View : <https://www.beaumccaffery.com.au/5718840>

Oversized open plan living & dining area w/ new hard flooring throughout
 North facing full length entertainer's balcony
 Well-appointed gas kitchen w/ s/s appliances & plenty of storage
 Large bedroom w/ BIR & balcony access
 Stylish modern bathroom w/ tub & internal laundry
 Security intercom, direct access to secure basement parking via lift & on-site security

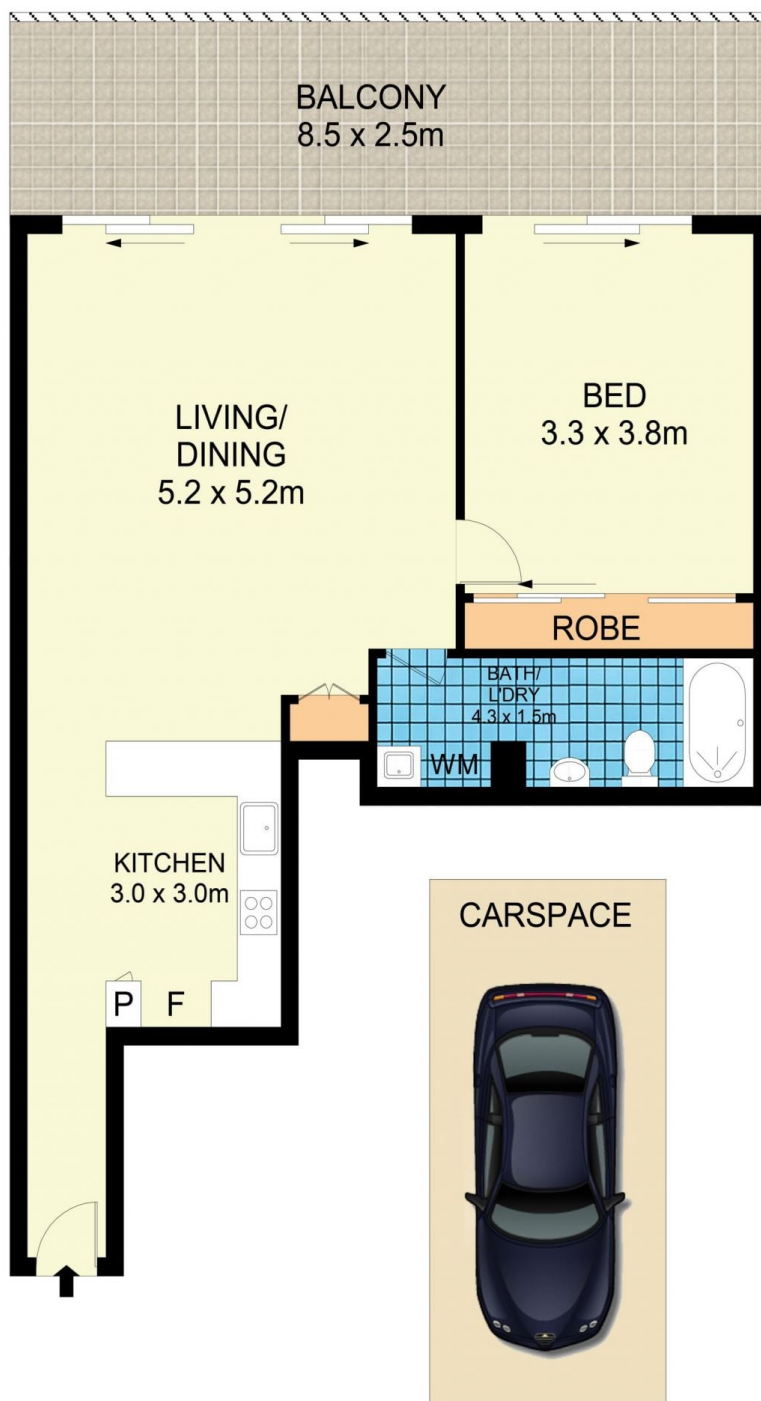


Melissah McCaffery J P
02 9565 5333



Rebecca Voncina
02 9565 5333

[For full version visit the website](https://www.beaumccaffery.com.au)



13207/177-219 Mitchell Road, Erskineville

Disclaimer

Floor Plan measurements are approximate and are for illustrative purposes only. While we cannot doubt the floor plans accuracy, we make no guarantee, warranty or representation as to the accuracy and completeness of the floor plan.