



16603/177-219 Mitchell Road Erskineville NSW

2  2  1 

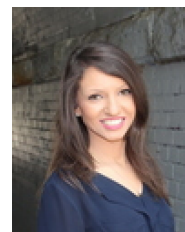
Positioned on the top floor in the newest stage of the complex, this highly prized West facing two bedroom apartment is arguably one of the best floor plans in Sydney Park Village. Featuring additional windows & showcasing light filled interiors + updates throughout with an open plan living & dining area separating the bedrooms & bathrooms, spend nothing or update to taste - take advantage to either occupy or invest in this lucrative opportunity.

Open plan living & dining w/ air con & generous outdoor area
Renovated gas kitchen w/ complex views through the window
Master bedroom w/ WIR, ensuite, air con & balcony access
Spacious second bedroom w/ BIR & Sydney Park hill

Type : Apartment
Land Size : 120 sqm
View : <https://www.beaumccaffery.com.au/574890>
2

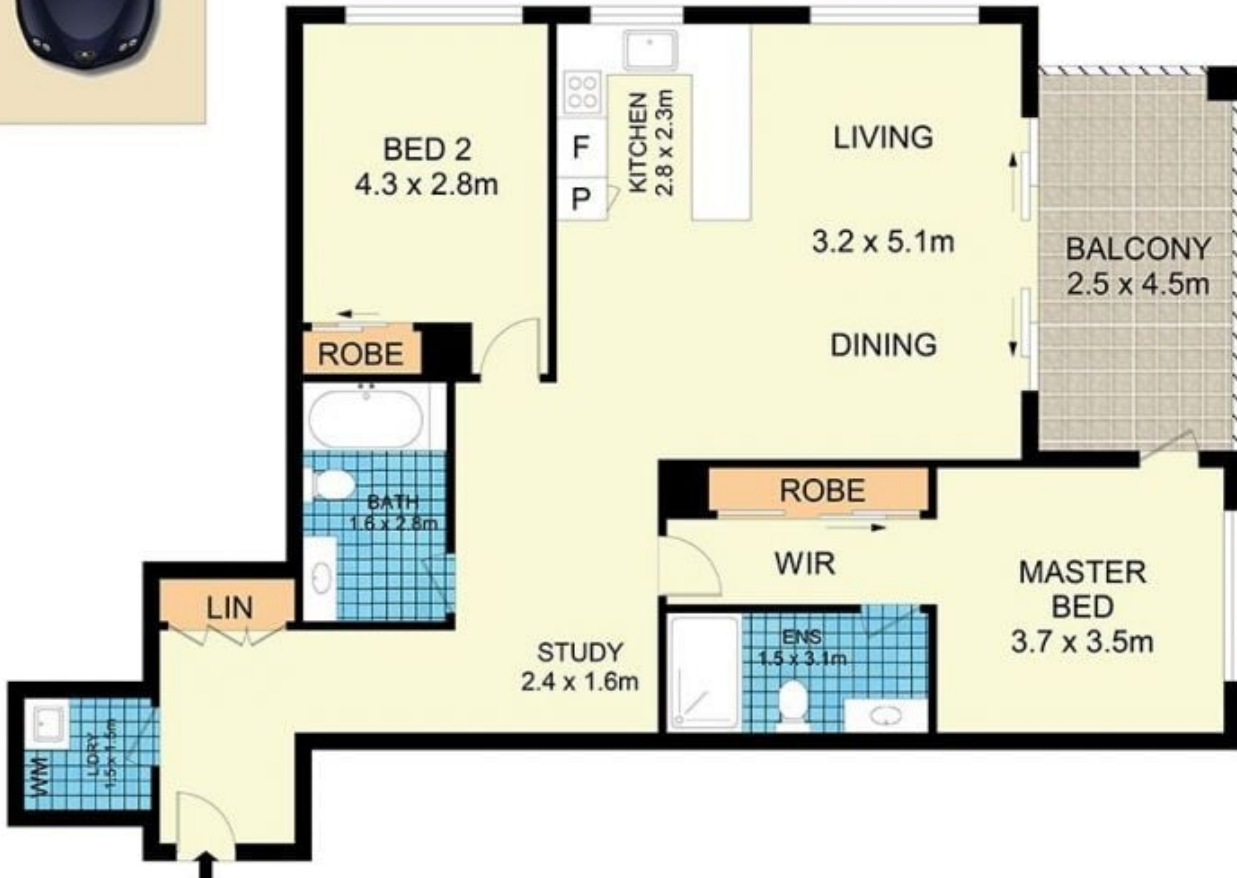


Melissah McCaffery J P
02 9565 5333



Rebecca Voncina
02 9565 5333

[For full version visit the website](https://www.beaumccaffery.com.au)



16603/177-219 Mitchell Road, Erskineville

Disclaimer

Floor Plan measurements are approximate and are for illustrative purposes only. While we cannot doubt the floor plans accuracy, we make no guarantee, warranty or representation as to the accuracy and completeness of the floor plan.