



17203/177-219 Mitchell Road Erskineville NSW

2  2  1 

Set within the lush-green surrounds of Sydney Park village, this immaculate two bedroom apartment + study with secure basement parking has a generous 123 sqm on title. Featuring an open plan layout with light filled & updated interiors throughout inspires a promising yet effortless inner city lifestyle.

Open plan living & dining w/ air con & outdoor area w/ leafy outlook

Well-appointed gas kitchen w/ complex views

Master bedroom w/ WIR, updated en-suite, air con & balcony access

Generous second bedroom w/ BIR & complex views

Two bathrooms, main w/ tub & separate laundry

Study area/sitting room perfect for home office or second

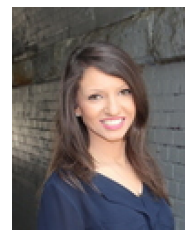
Type : Apartment

Land Size : 123 sqm

View : <https://www.beaumccaffery.com.au/5857839>



Melissah McCaffery J P
02 9565 5333



Rebecca Voncina
02 9565 5333

[For full version visit the website](https://www.beaumccaffery.com.au)



17203/177-219 Mitchell Road, Erskineville

Disclaimer

Floor Plan measurements are approximate and are for illustrative purposes only. While we cannot doubt the floor plans accuracy, we make no guarantee, warranty or representation as to the accuracy and completeness of the floor plan