



1506/177-219 Mitchell Road Erskineville NSW

1  1 

A private east facing haven positioned on the top floor, thoughtfully renovated throughout. Showcasing a corner light filled position & newly updated interiors - enjoy multiple outdoor spaces + the utmost convenience of the inner west at your doorstep.

Open plan living/dining & study nook w/ air con & multiple outdoor areas

New downlights, blinds, carpet & appliances throughout
New gas kitchen w/ new s/s appliances & plenty of storage + breakfast bar (gas included in the strata levies)

Master bedroom w/ mirrored BIR & remote electric blinds

New bathroom w/ walk in shower + separate enclosed laundry

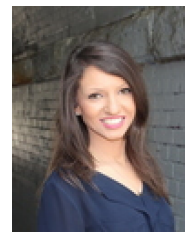
Goget cars near-by, security intercom, lift access & 24/7

Type : Apartment

View : <https://www.beaumccaffery.com.au/5885456>

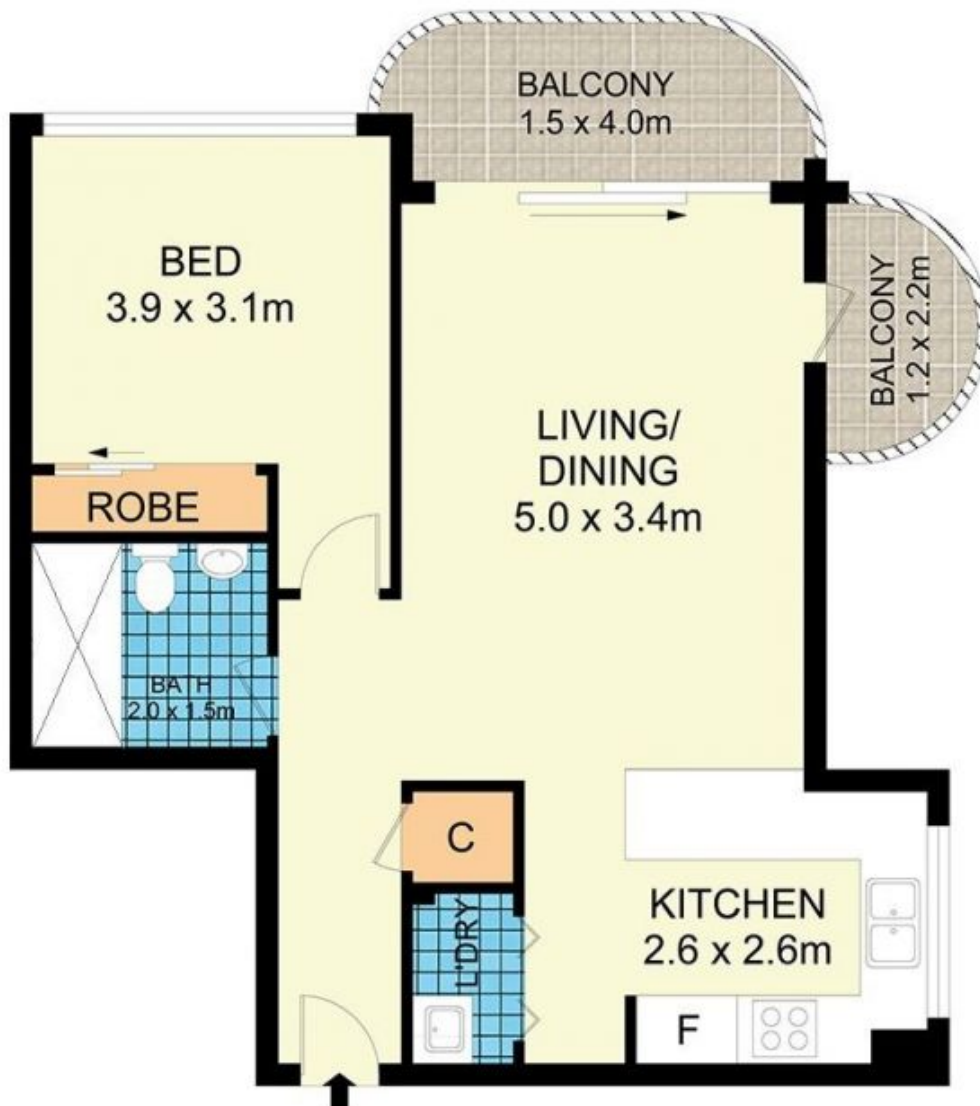


Melissah McCaffery J P
02 9565 5333



Rebecca Voncina
02 9565 5333

[For full version visit the website](https://www.beaumccaffery.com.au)



1506/177-219 Mitchell Road, Erskineville

Disclaimer

Floor Plan measurements are approximate and are for illustrative purposes only. While we cannot doubt the floor plans accuracy, we make no guarantee, warranty or representation as to the accuracy and completeness of the floor plan.