



1406/177-219 Mitchell Road Erskineville NSW

1  1 

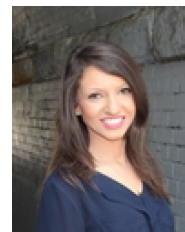
A private east facing haven positioned on the fourth floor. Showcasing a corner light filled position - enjoy multiple outdoor spaces + the utmost convenience of the inner west at your doorstep.

Type : Apartment
View : <https://www.beaumccaffery.com.au/5909183>

Open plan living/dining w/ air con & multiple outdoor areas
Currently rented for \$490/week
Gas kitchen w/ plenty of storage (gas included in the strata levies)
Master bedroom w/ mirrored BIR
Bathroom w/ bath + separate enclosed laundry
Goget cars near-by, security intercom, lift access & 24/7 onsite security
Photos used are from previous campaign
Strata levies \$1545/q

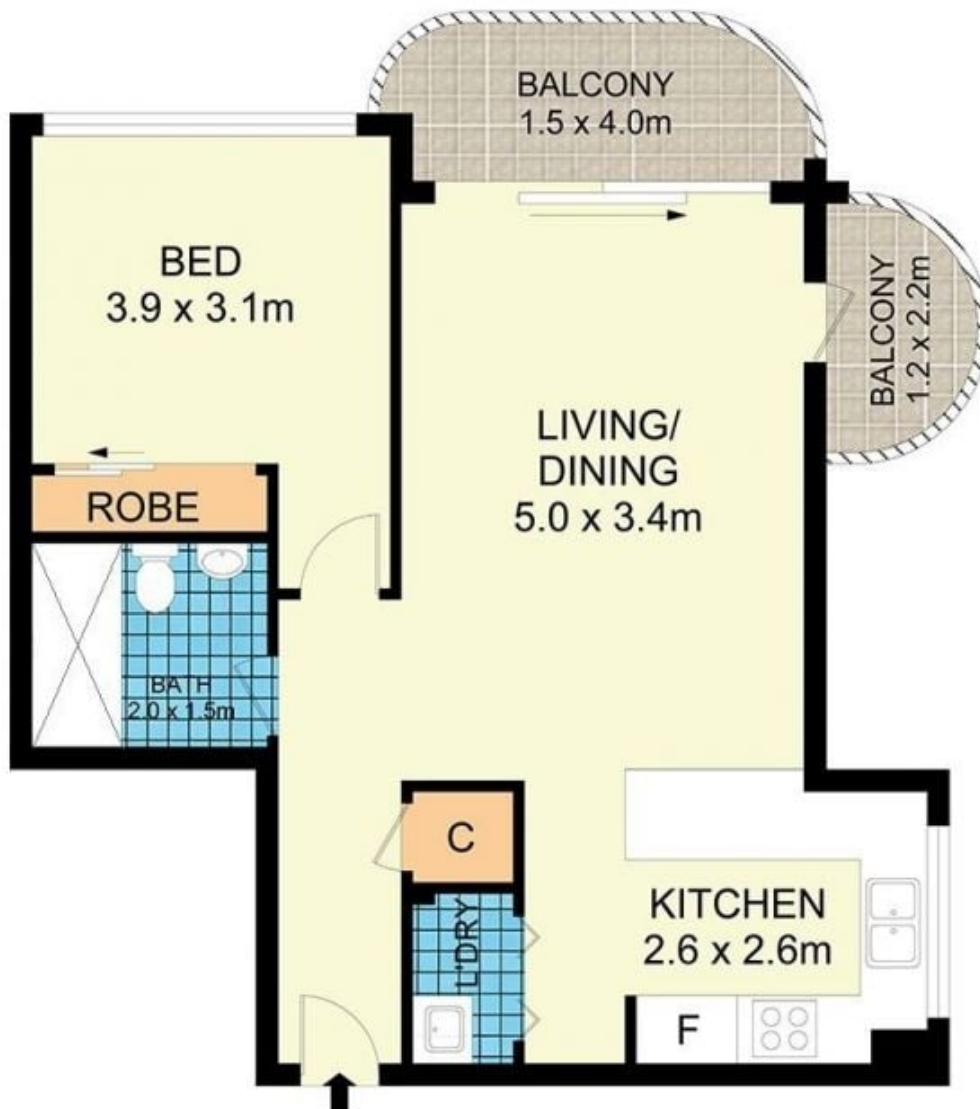


Melissah McCaffery J P
02 9565 5333



Rebecca Voncina
02 9565 5333

[For full version visit the website](https://www.beaumccaffery.com.au)



1406/177-219 Mitchell Road, Erskineville

Disclaimer

Floor Plan measurements are approximate and are for illustrative purposes only. While we cannot doubt the floor plans accuracy, we make no guarantee, warranty or representation as to the accuracy and completeness of the floor plan.