

13607/177-219 Mitchell Road Erskineville NSW

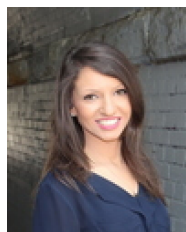
1  1  1 

Nestled amid the oasis-like gardens of Sydney Park Village, this generous North facing 92 sqm apartment is perched on the top floor. Featuring an open plan living/dining area w/ air conditioning & light filled interiors throughout - with nothing to spend, this apartment is perfectly suited for first home buyers or investors alike.

Type : Apartment
Land Size : 92 sqm
View : <https://www.beaumccaffery.com.au/5919937>

Oversized open plan living & dining area w/ air conditioning

Top floor North facing full length entertainer's balcony
 Well-appointed gas kitchen w/ s/s appliances
 Generous bedroom w/ BIR & balcony access
 Stylish bathroom w/ tub & internal laundry
 Secure undercover parking w/ storage box & ample visitor parking

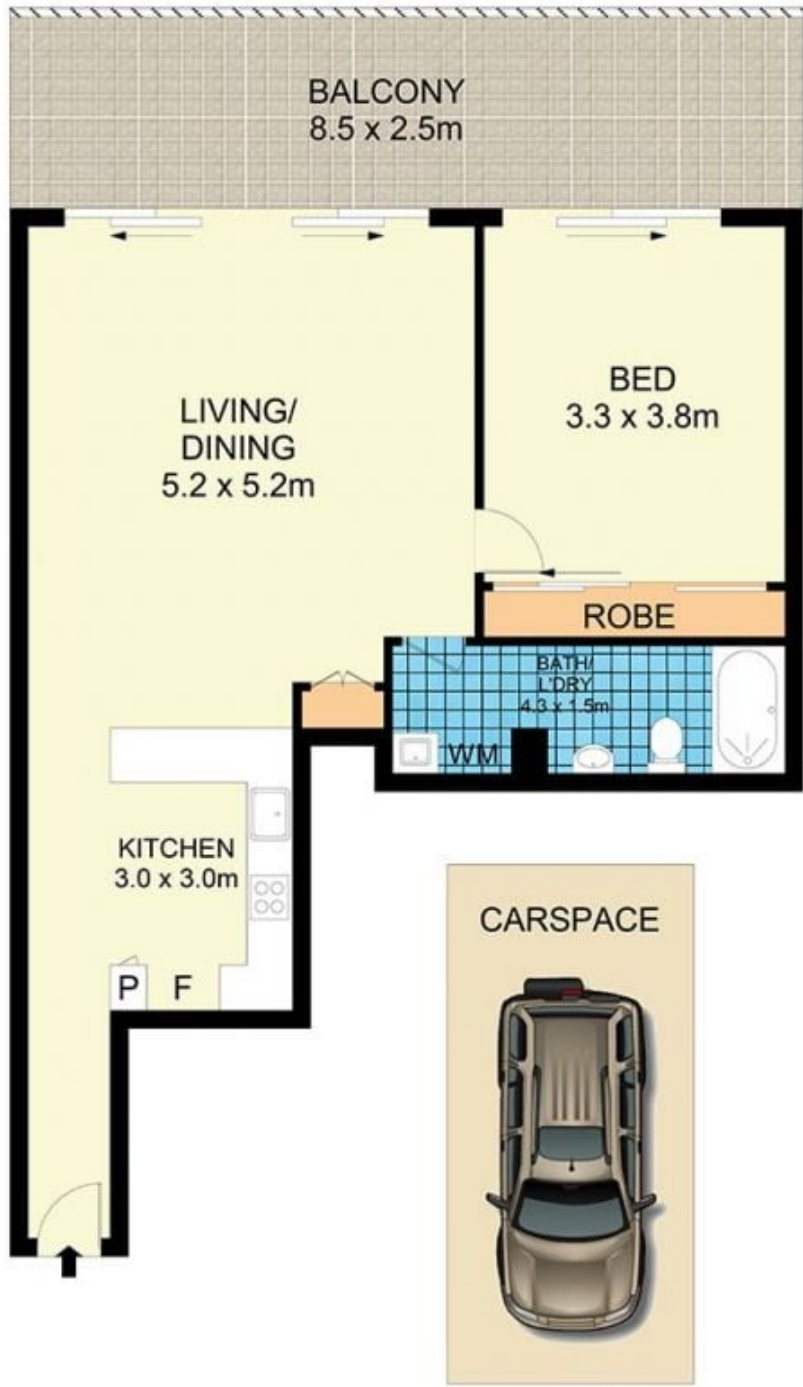


Rebecca Voncina
02 9565 5333



Melissah McCaffery J P
02 9565 5333

[For full version visit the website](https://www.beaumccaffery.com.au)



13607/177-219 Mitchell Road, Erskineville

Disclaimer

Floor Plan measurements are approximate and are for illustrative purposes only. While we cannot doubt the floor plans accuracy, we make no guarantee, warranty or representation as to the accuracy and completeness of the floor plan.