



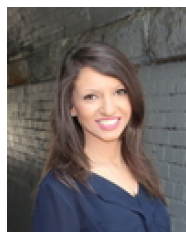
10301/177-219 Mitchell Road Erskineville NSW

2  2  1 

Set amid the lush green surrounds of Sydney Park Village, this generous North facing 121 sqm apartment features an open plan layout w/ light filled interiors, new paint + carpet - the ideal home for young professionals or investment opportunity located in a convenient inner-city suburb.

Type : Apartment
Land Size : 121 sqm
View : <https://www.beaumccaffery.com.au/5925206>

Spacious open plan living & dining area
 North facing entertainer's balcony w/ leafy surrounds
 Well-appointed gas kitchen w/ s/s appliances
 Light filled master bedroom w/ WIR, ensuite & balcony access
 Spacious second bedroom w/ BIR
 Separate internal laundry & plenty of storage
 Security intercom, direct access to secure basement parking via lift & 24/7 onsite security



Rebecca Voncina
02 9565 5333



Melissah McCaffery J P
02 9565 5333

[For full version visit the website](https://www.beaumccaffery.com.au)



10301/177-219 Mitchell Road, Erskineville

Disclaimer

Floor Plan measurements are approximate and are for illustrative purposes only. While we cannot doubt the floor plans accuracy, we make no guarantee, warranty or representation as to the accuracy and completeness of the floor plan.