






301/75-81 Macdonald Street Erskineville NSW

2  2  1 

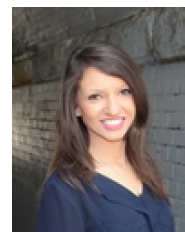
Set within a vibrant lifestyle precinct, this impressive two bedroom apartment is a clear deviation from the stock-standard designs. Designed w/ quality & style in mind featuring high end finishes. The open plan layout with seamless in/outdoor living, dining & entertaining areas blend together w/ the bi-fold & floor to ceiling glass doors creating a tranquil retreat w/ spacious light & airy spaces throughout.

Open plan living & dining areas w/ ducted air-con, hardwood flooring, block out blinds + linen curtains & inbuilt custom joinery by Middleton Design
Gas kitchen w/ Bosch appliances, Caesarstone benchtops, plenty of storage & café-style alfresco breakfast bar creating a connection to the indoors & outdoors

Type : Apartment
Land Size : 114 sqm
View : <https://www.beaumccaffery.com.au/5925425>

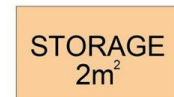
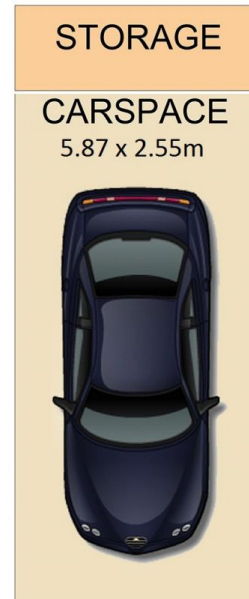
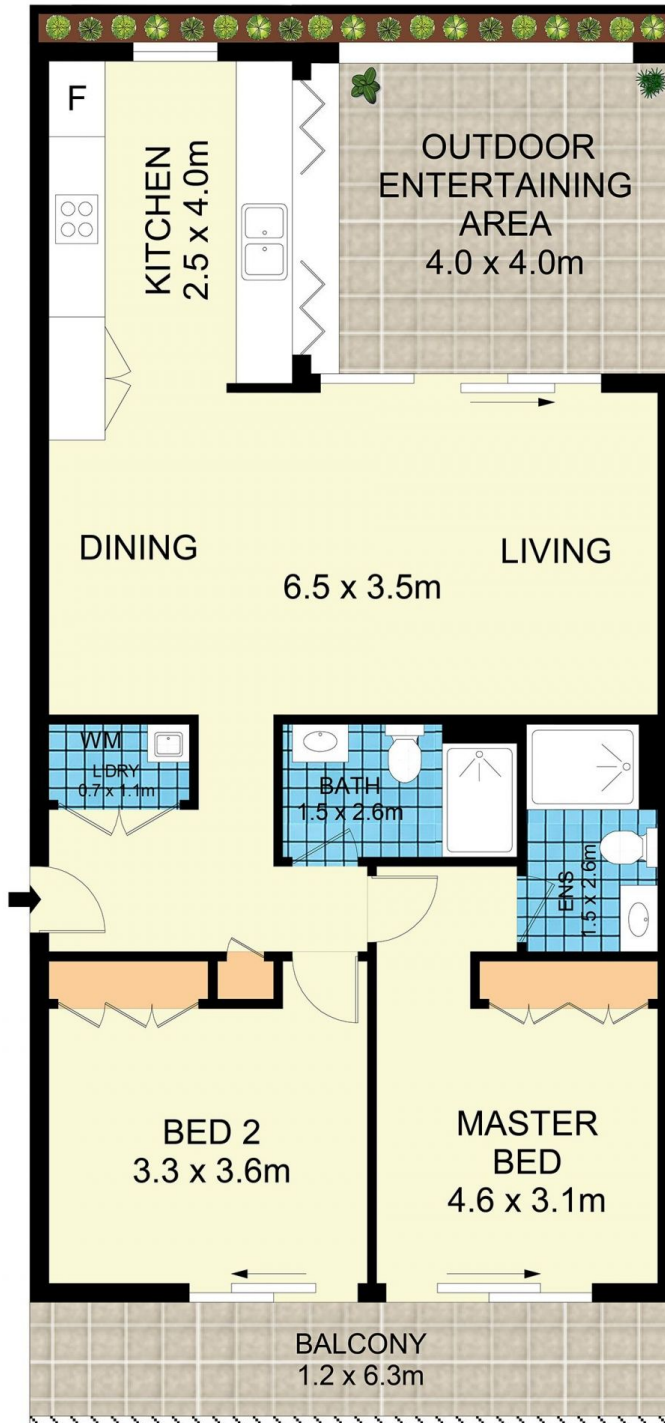


Melissah McCaffery J P
02 9565 5333



Rebecca Voncina
02 9565 5333

[For full version visit the website](https://www.beaumccaffery.com.au)



301/75 Macdonald Street, Erskineville



Disclaimer

Floor Plan measurements are approximate and are for illustrative purposes only. While we cannot doubt the floor plans accuracy, we make no guarantee, warranty or representation as to the accuracy and completeness of the floor plan.