

**15503/177-219 Mitchell Road Erskineville NSW**

1  1  1 

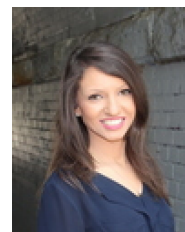
Set in the exclusive Sydney Park Village resort style complex, this sun drenched one bedroom apartment offers immense privacy while capturing the essence of urban city living. With an attractive west facing aspect and over-sized entertainer's balcony, this apartment offers the perfect inner city home or investment opportunity.

Spacious open plan lounge & dining w/ air-conditioning  
 Generous covered entertainers' terrace  
 Modern gas kitchen w/ new s/s appliances  
 Master bedroom w/ BIR & balcony access  
 Separate study, perfect for home office or nursery  
 Stylish bathroom w/ tub & laundry facilities  
 Security intercom, direct access to secure basement parking via lift & 24/7 onsite security

**Type** : Apartment  
**Land Size** : 89 sqm  
**View** : <https://www.beaumccaffery.com.au/5987082>

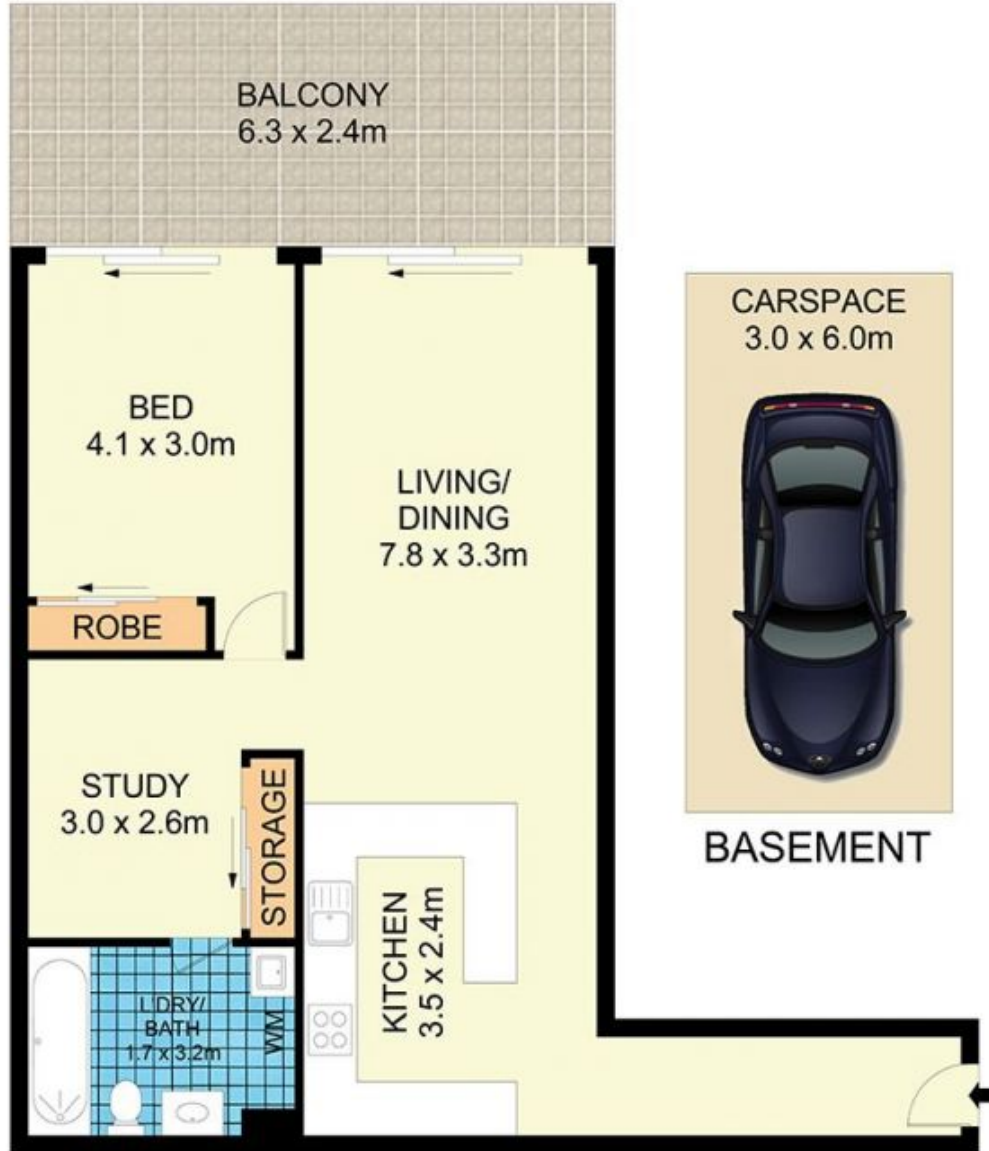


**Melissah McCaffery J P**  
02 9565 5333



**Rebecca Voncina**  
02 9565 5333

[For full version visit the website](https://www.beaumccaffery.com.au)



15503/177219 Mitchell Road, Erskineville

**Disclaimer**

Floor Plan measurements are approximate and are for illustrative purposes only. While we cannot doubt the floor plans accuracy, we make no guarantee, warranty or representation as to the accuracy and completeness of the floor plan.