

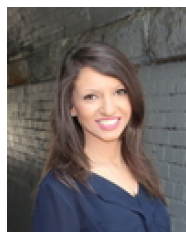
18404/177-219 Mitchell Road Erskineville NSW

1  1  1 

Nestled within the lush-green surrounds of Sydney Park Village, this one bedroom apartment with study and parking has an impressive 84 sqm on title. Featuring an open plan layout and attractive North facing aspect inspires a promising yet effortless inner city lifestyle.

Type : Apartment
Land Size : 84 sqm
View : <https://www.beaumccaffery.com.au/5987576>

Spacious open plan living & dining area
 Generous entertainer's balcony w/ leafy outlook
 Modern gas kitchen w/ s/s appliances & plenty of storage
 Master bedroom w/ air con, BIR & balcony access
 Separate study, perfect for home office or nursery
 Stylish bathroom w/ tub & laundry facilities
 Security intercom, direct access to secure basement parking via lift & 24/7 onsite security

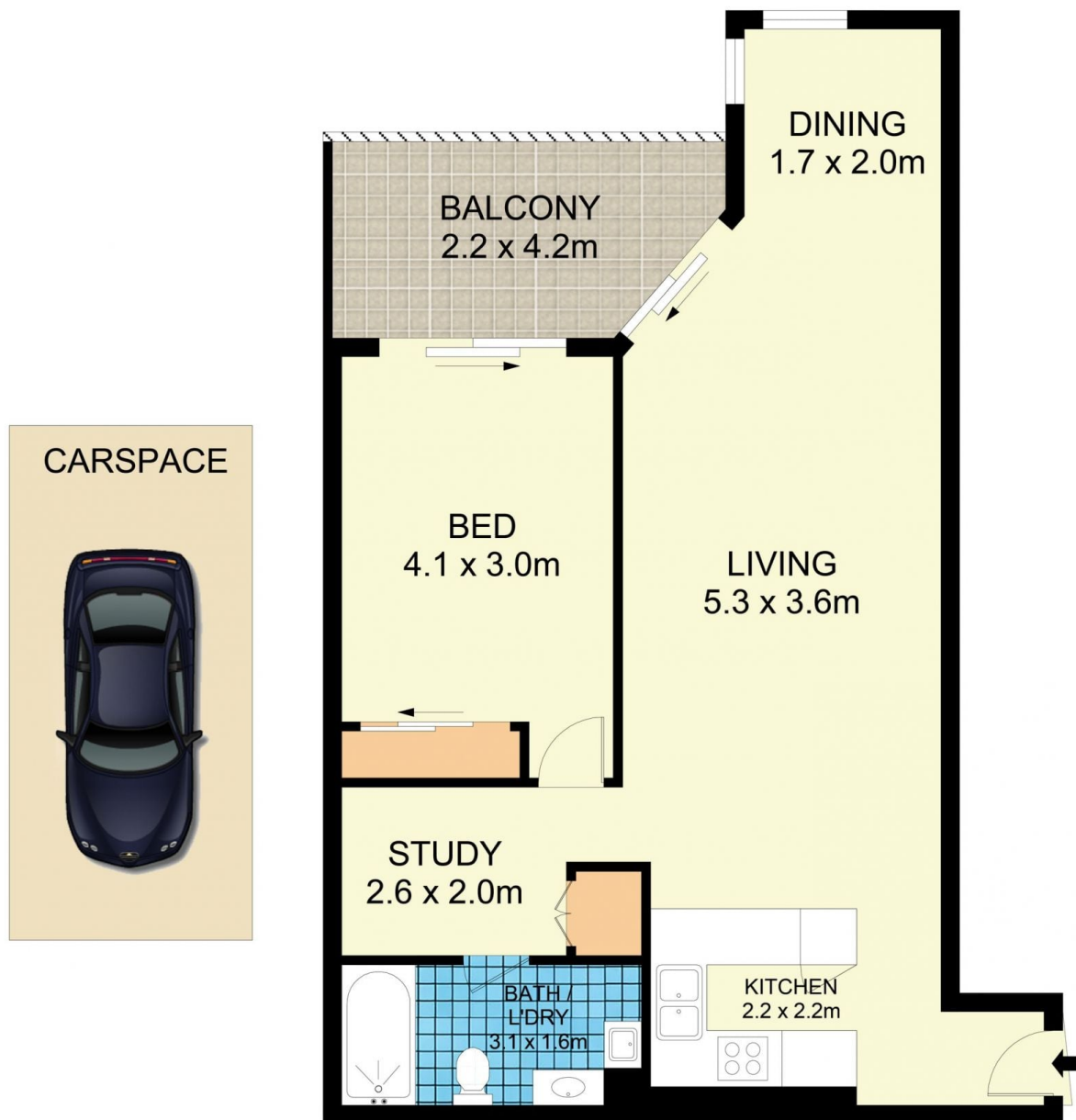
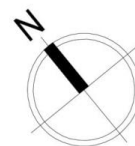


Rebecca Voncina
02 9565 5333



Melissah McCaffery J P
02 9565 5333

[For full version visit the website](https://www.beaumccaffery.com.au)



18404/177-219 Mitchell Road, Erskineville

Disclaimer

Floor Plan measurements are approximate and are for illustrative purposes only. While we cannot doubt the floor plans accuracy, we make no guarantee, warranty or representation as to the accuracy and completeness of the floor plan.