



16408/177-219 Mitchell Road Erskineville NSW

1  1  1 

An inner-city escape w/ modern ambiance & impressive privacy, this desirable apartment features a versatile floorplan w/ 81 sqm on title. Located in the newest building in the complex on its own separate strata plan, this apartment features an open plan layout and attractive North facing aspect coupled w/ impressive manicured complex grounds & resort style facilities - this home ticks all the boxes!

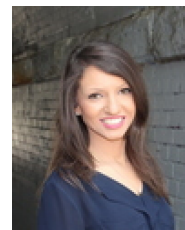
Spacious open plan living & dining area w/ a/c
 Generous North facing balcony w/ private leafy outlook
 Modern gas kitchen w/ s/s appliances & plenty of storage
 Over-sized master bedroom, BIR & balcony access
 Separate study, perfect for second bedroom, home office or nursery

[For full version visit the website](https://www.beaumccaffery.com.au)

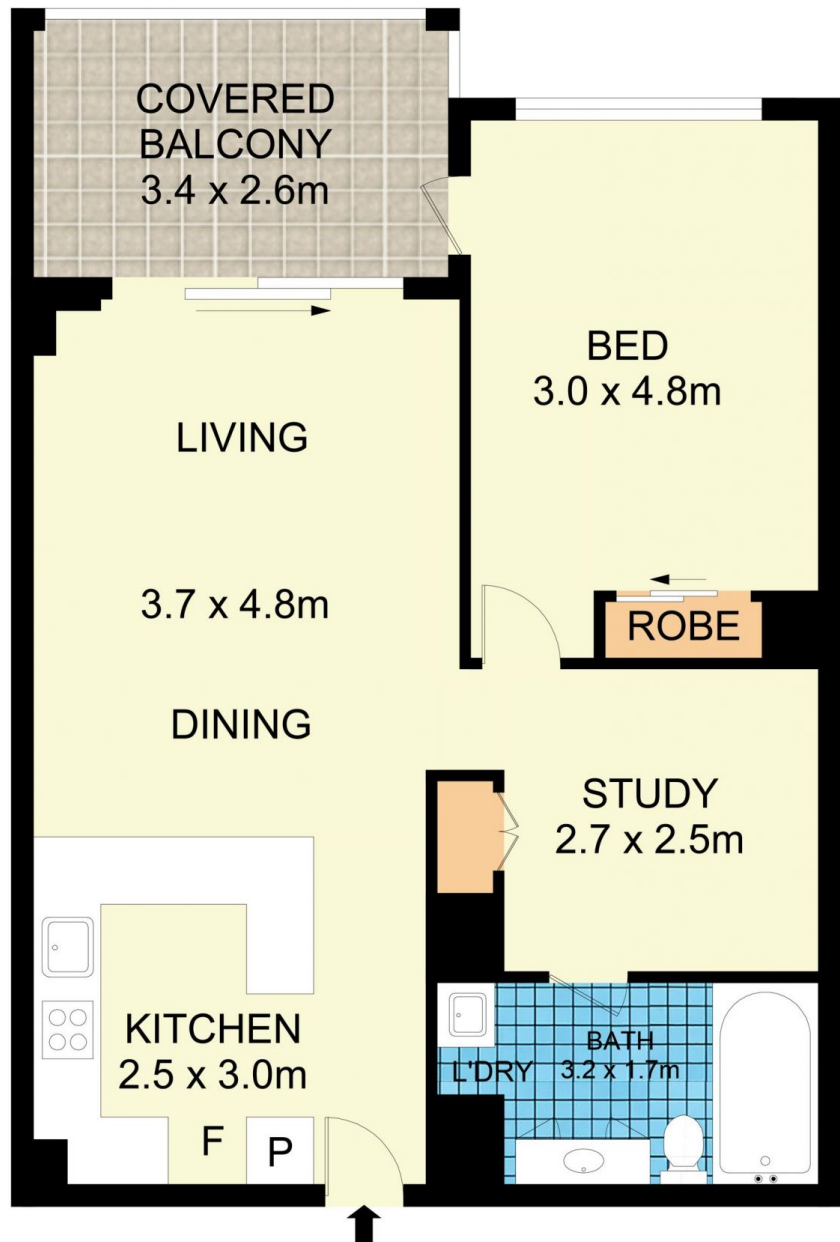
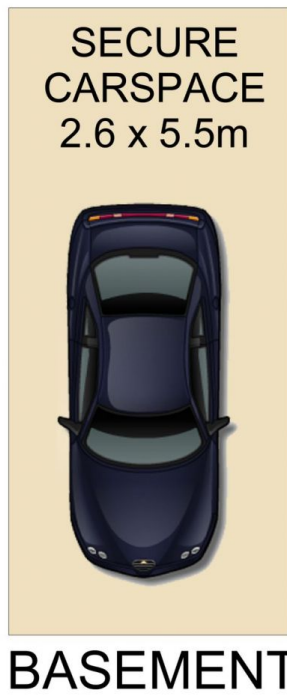
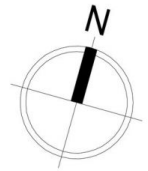
Type : Apartment
Price : \$ 757,000
Land Size : 81 sqm
View : <https://www.beaumccaffery.com.au/6194660>



Melissah McCaffery J P
02 9565 5333



Rebecca Voncina
02 9565 5333



16408/177-219 Mitchell Road, Erskineville

Disclaimer

Floor Plan measurements are approximate and are for illustrative purposes only. While we cannot doubt the floor plans accuracy, we make no guarantee, warranty or representation as to the accuracy and completeness of the floor plan