



3306/177-219 Mitchell Road Erskineville NSW

1  1  1 

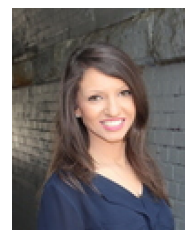
Surrounded w/ a lush green outlook, this apartment delivers an impressive sense of privacy in a city-fringe position. With an impressively large lounge/dining & oversized bedroom - the ideal purchase for first home buyers or savvy investors.

Light filled open plan living & dining area
 Air conditioning approved for installation
 Covered balcony w/ park views
 Well-appointed gas kitchen w/ s/s appliances & plenty of storage
 Spacious light filled master bedroom w/ BIR
 Stylish bathroom w/ tub & laundry facilities
 Security intercom, direct access to secure basement parking via lift & 24/7 onsite security

Type : Apartment
Price : \$ 610,000
Land Size : 74 sqm
View : <https://www.beaumccaffery.com.au/6195794>

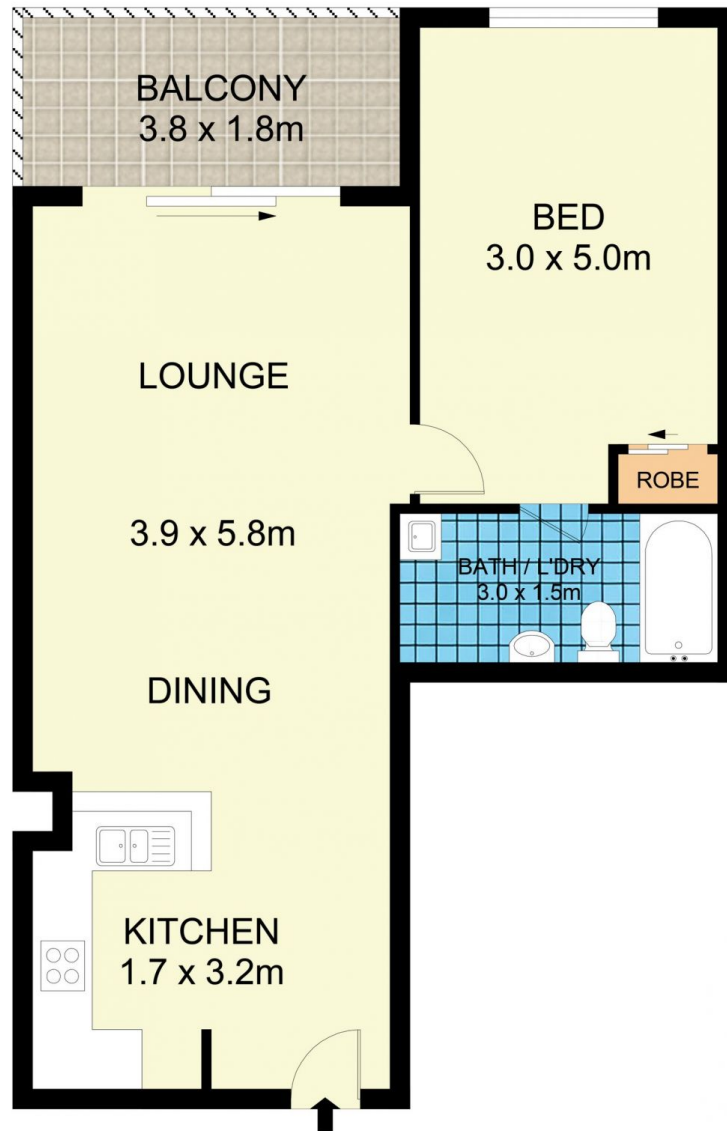
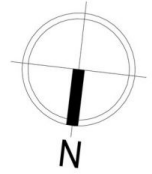


Melissah McCaffery J P
02 9565 5333



Rebecca Voncina
02 9565 5333

[For full version visit the website](https://www.beaumccaffery.com.au)



SECURE CARSPACE



3306/177-219 Mitchell Road, Erskineville

Disclaimer

Floor Plan measurements are approximate and are for illustrative purposes only. While we cannot doubt the floor plans accuracy, we make no guarantee, warranty or representation as to the accuracy and completeness of the floor plan