



9201/177-219 Mitchell Road Erskineville NSW

2  2  1 

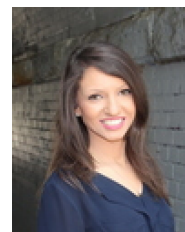
Set within a lush resort style setting, this two bedroom apartment features an open plan layout w/ a desirable North facing aspect & private leafy surrounds - live the inner city lifestyle in one of the most thriving suburbs.

Type : Apartment
Land Size : 86 sqm
View : <https://www.beaumccaffery.com.au/6338318>

Open plan living & dining area
 Private North facing balcony w/ leafy outlook
 Well-appointed gas kitchen w/ s/s appliances (no separate gas bill in this SP)
 Master bedroom w/ walk in wardrobe & en-suite
 Spacious second bedroom w/ balcony access
 Main bathroom w/ tub & separate laundry
 Security intercom, direct access to secure basement parking via lift & 24/7 on-site security
 Strata levies approx. \$2200/q

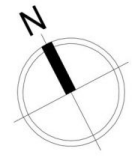


Melissah McCaffery J P
02 9565 5333



Rebecca Voncina
02 9565 5333

[For full version visit the website](https://www.beaumccaffery.com.au)



9201/177-219 Mitchell Road, Erskineville

Disclaimer

Floor Plan measurements are approximate and are for illustrative purposes only. While we cannot doubt the floor plans accuracy, we make no guarantee, warranty or representation as to the accuracy and completeness of the floor plan.