



14207/177-219 Mitchell Road Erskineville NSW

1  1  1 

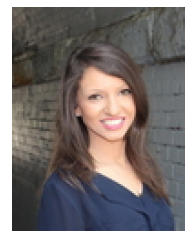
Designed for laid back urban living this internal, East facing one bedroom plus study apartment features a full length entertainer's balcony with direct views over the tennis courts, pool and manicured gardens.

Type : Apartment
Price : \$ 780,000
View : <https://www.beaumccaffery.com.au/6347387>

Open plan living & dining area w/ air con
East facing entertainers balcony
Well appointed gas kitchen w/ s/s appliances
Spacious bedroom w/ air con, WIR & balcony access
Study area & generous storage throughout
Main bathroom w/ tub & internal laundry
Security intercom, direct access to secure basement parking via lift & on-site security
Moments to cafes, Sydney Park & transport



Michael McCaffery
02 9565 5333



Rebecca Voncina
02 9565 5333

[For full version visit the website](https://www.beaumccaffery.com.au)