



7709/177-219 Mitchell Road Erskineville NSW

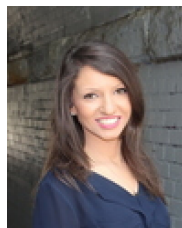
2  2  1 

Enjoy the serenity & resort style living w/ this impressive penthouse apartment. Its top-floor position creates breezy light-filled interiors throughout. Enjoy effortless living + the utmost convenience of the inner west at your doorstep - a lucrative upgrade suited for a professional couple, young family or the savvy opportunist.

Type : Apartment
Price : \$ 968,000
Land Size : 128 sqm
View : <https://www.beaumccaffery.com.au/6366787>

Spacious open plan living & dining w/ air-conditioning that flows to the balcony
 Full width East facing balcony w/ panoramic city & district views
 New gas kitchen w/ s/s appliances
 Oversized master bedroom w/ BIR & en-suite
 Second bedroom w/ BIR
 Main bathroom w/ tub, separate laundry & separate powder

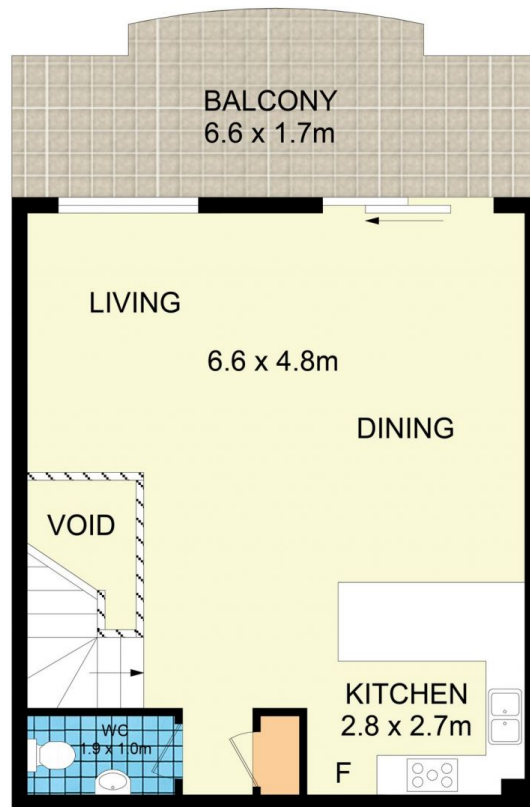
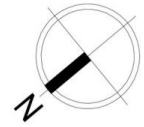
[For full version visit the website](https://www.beaumccaffery.com.au)



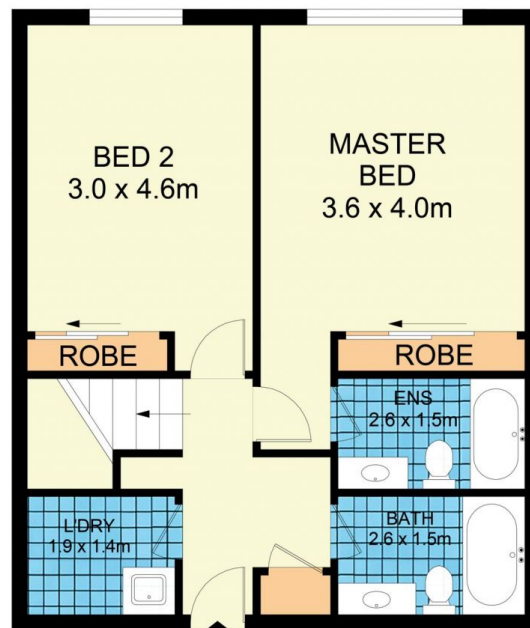
Rebecca Voncina
02 9565 5333



Melissah McCaffery J P
02 9565 5333



FIRST LEVEL



ENTRY LEVEL



7709/177-219 Mitchell Road, Erskineville

Disclaimer

Floor Plan measurements are approximate and are for illustrative purposes only. While we cannot doubt the floor plans accuracy, we make no guarantee, warranty or representation as to the accuracy and completeness of the floor plan