



3208/177-219 Mitchell Road Erskineville NSW

2  2  1 

Tranquilly set within the tightly held community of Sydney Park Village, this impressive two bedroom apartment has a generous floor plan featuring updated modern interiors & expansive outdoor area. Designed for in/outdoor living & entertaining, the ideal sanctuary for those seeking low-maintenance, relaxed living.

Large living & dining area that flows seamlessly to the courtyard

New floorboards throughout

Modern gas kitchen w/ quality appliances

Enormous low maintenance courtyard ideal for alfresco entertaining w/ mature trees & secure outdoor area for young children w/ garden shed

Expansive master bedroom w/ BIR & en-suite + generous

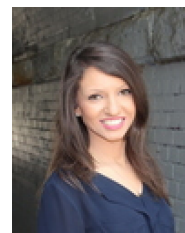
Type : Apartment

Price : \$ 950,000

View : <https://www.beaumccaffery.com.au/6403565>

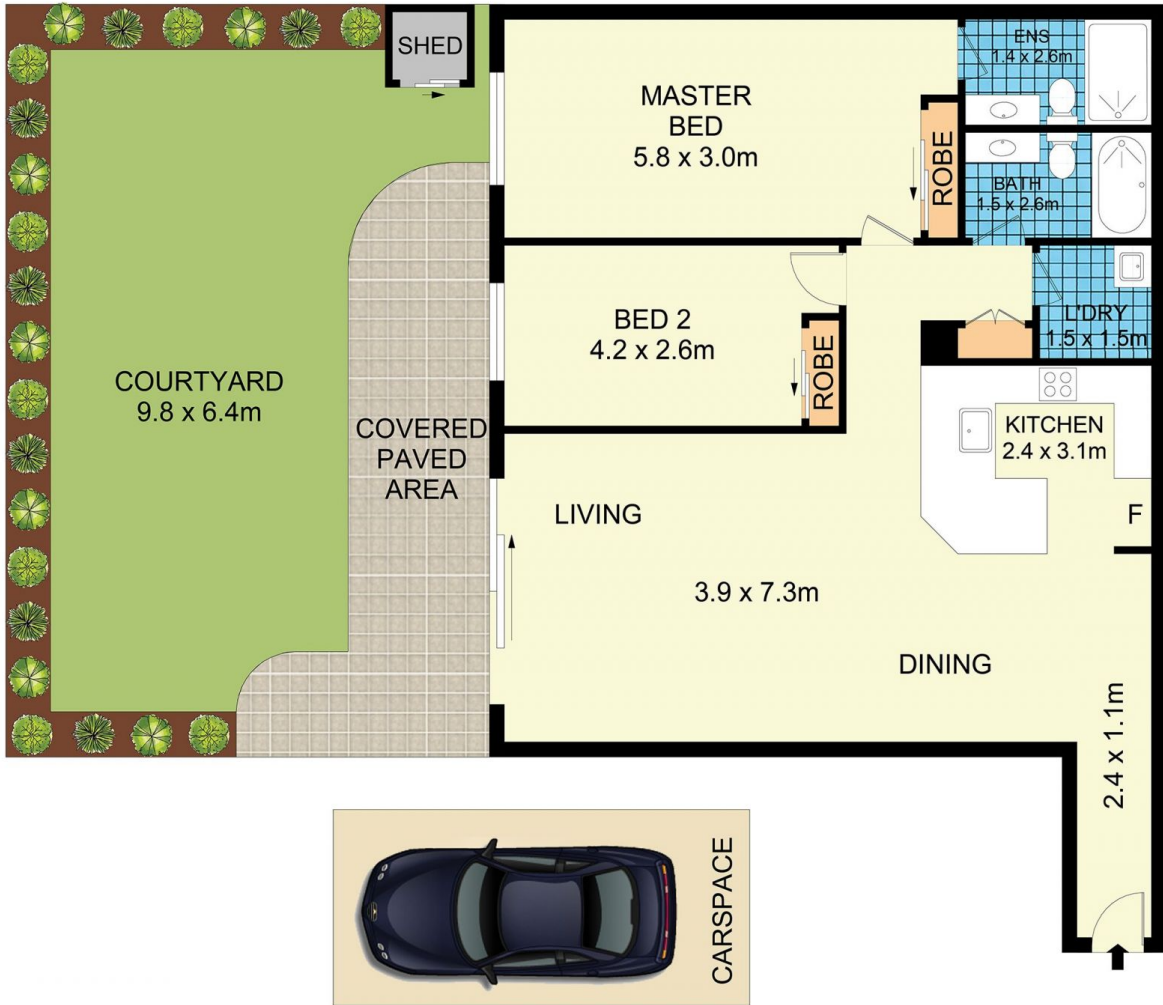
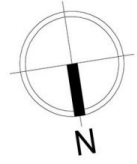


Melissah McCaffery J P
02 9565 5333



Rebecca Voncina
02 9565 5333

[For full version visit the website](https://www.beaumccaffery.com.au)



3208/177-219 Mitchell Road, Erskineville



Disclaimer

Floor Plan measurements are approximate and are for illustrative purposes only. While we cannot doubt the floor plans accuracy, we make no guarantee, warranty or representation as to the accuracy and completeness of the floor plan.