



3608/177-219 Mitchell Road Erskineville NSW

2  2  1 

This desirable park-side retreat delivers the essence of inner-city living within the lush surrounds of Sydney Park Village. Offering 114sqm on title & a generous balcony w/ private park views, complete w/ parking & onsite facilities including gymnasium, pool, tennis courts & loads more - the perfect home for a young couple, family or lucrative investment for the savvy opportunist.

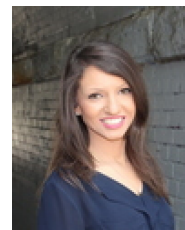
Type : Apartment
Price : \$ 870,000
Land Size : 114 sqm
View : <https://www.beaumccaffery.com.au/6406587>

Open plan living & dining area w/ air-conditioning
 Generous balcony w/ views to Sydney Park & Alan Davidson oval
 Well-appointed gas kitchen w/ new s/s Westinghouse appliances
 Oversized master bedroom w/ BIR & en-suite + spacious second bedroom w/ BIR

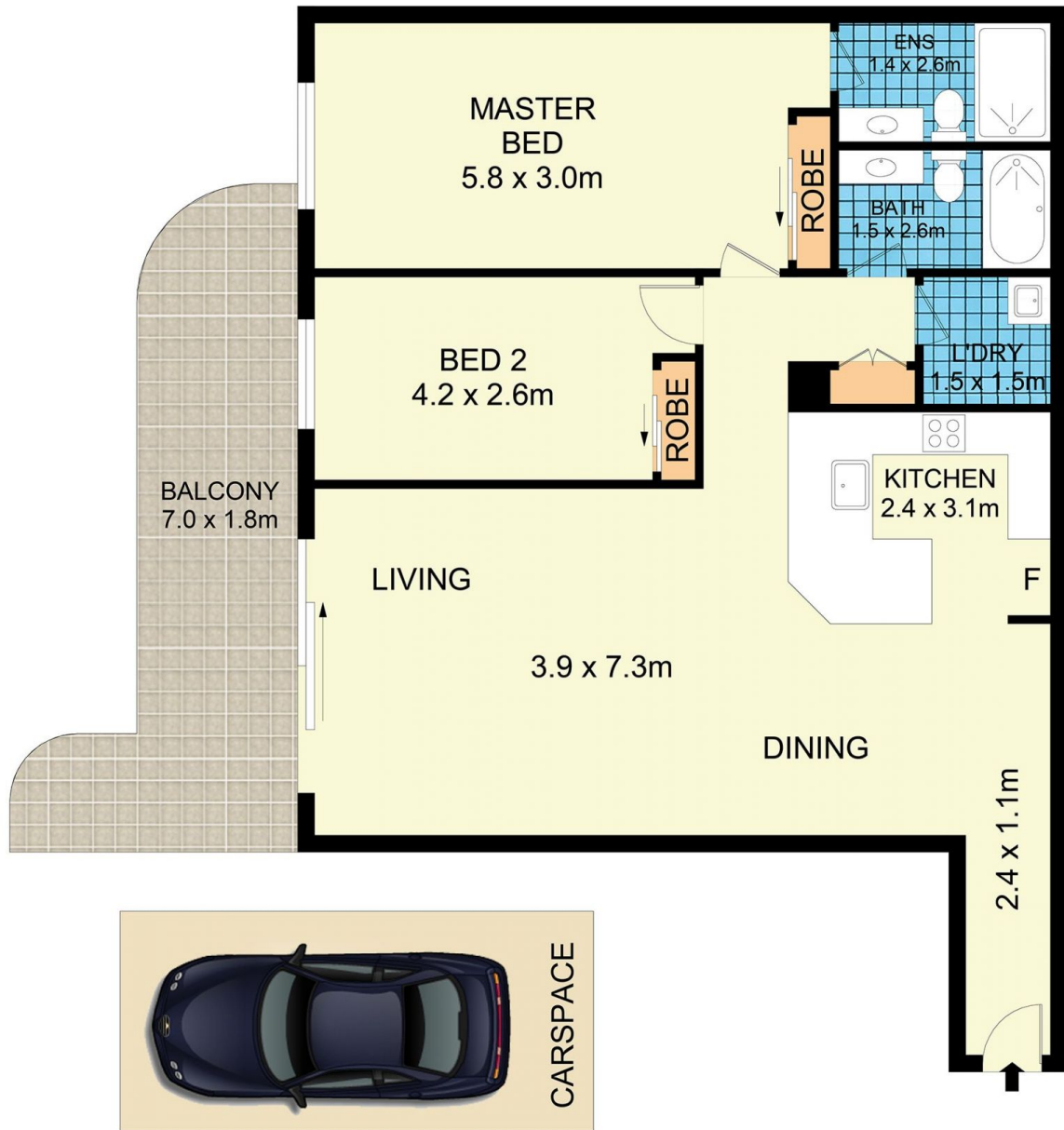
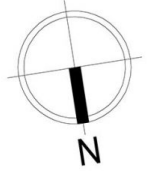
[For full version visit the website](https://www.beaumccaffery.com.au)



Melissah McCaffery J P
02 9565 5333



Rebecca Voncina
02 9565 5333



3608/177-219 Mitchell Road, Erskineville



Disclaimer

Floor Plan measurements are approximate and are for illustrative purposes only. While we cannot doubt the floor plans accuracy, we make no guarantee, warranty or representation as to the accuracy and completeness of the floor plan.