

1006/18-20 Pelican Street Surry Hills NSW

1  1  1 

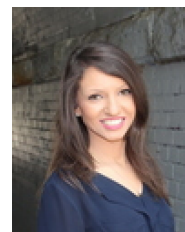
Set high within the acclaimed 'Monument' building, this sophisticated apartment is located on the 10th floor & features impressive city views. With floor-to-ceiling windows & a well-configured floorplan, it holds impressive appeal as an ideal home or investment opportunity.

Type : Apartment
Land Size : 83 sqm
View : <https://www.beaumccaffery.com.au/6422006>

Open plan living & dining area w/ a/c & city views
 Designer quality kitchen w/ Caesarstone benchtops & s/s appliances
 Covered alfresco balcony that offers optimum privacy
 Oversized master bedroom w/ BIR & balcony access
 Multipurpose/2nd bedroom, study or nursery
 Resort-style facilities including heated outdoor pool, gym, manicured gardens & concierge
 Pet friendly, security intercom access, lift access &

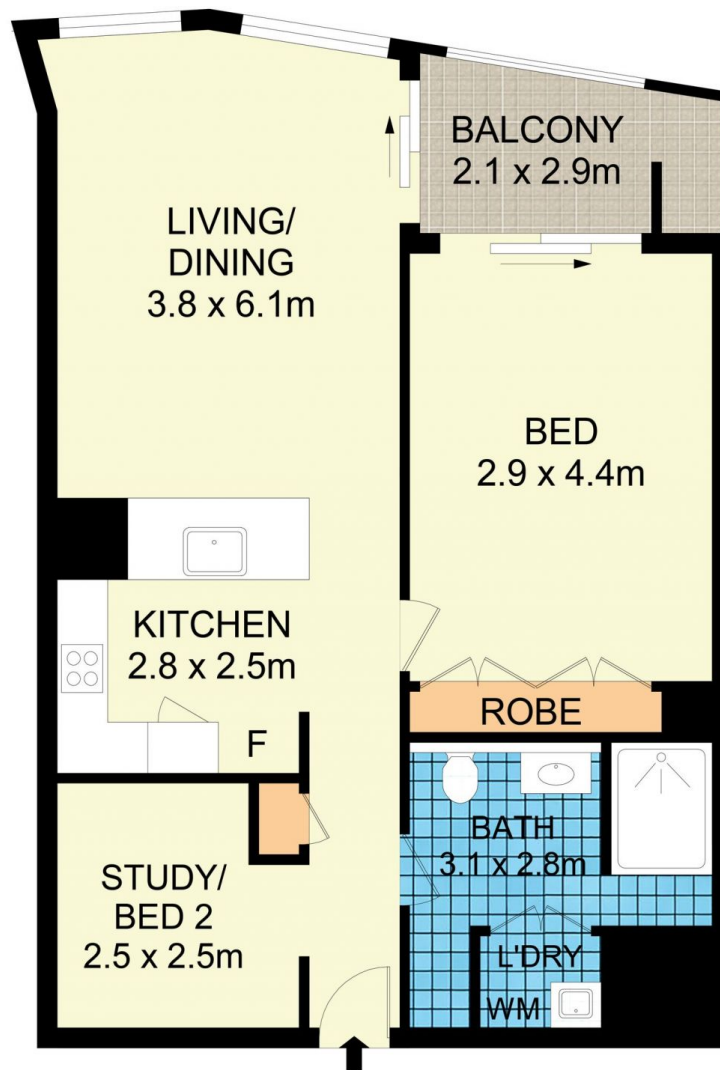
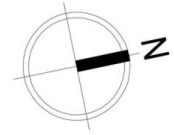


Melissah McCaffery J P
02 9565 5333



Rebecca Voncina
02 9565 5333

[For full version visit the website](https://www.beaumccaffery.com.au)



1006/20 Pelican Street, Surry Hills



Disclaimer

Floor Plan measurements are approximate and are for illustrative purposes only. While we cannot doubt the floor plans accuracy, we make no guarantee, warranty or representation as to the accuracy and completeness of the floor plan.