



6408/177-219 Mitchell Road Erskineville NSW

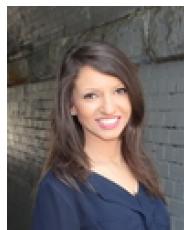
2  2  1 

This light filled two-bedroom apartment offers a lifestyle that is second to none. Set within the sought-after Sydney Park Village complex, this internal facing apartment features an open plan layout with a desirable North facing aspect and located in a thriving inner-city suburb - exceptional buying value for first home buyers or investors alike.

Type : Apartment
Price : \$ 830,000
Land Size : 103 sqm
View : <https://www.beaumccaffery.com.au/6428512>

Open plan living & dining area flows onto the North facing balcony
 Well-appointed gas kitchen w/ s/s appliances
 Two double bedrooms, main w/ WIR & en-suite
 Main bathroom w/ bathtub & internal laundry facilities
 Security intercom, direct access to secure basement parking via lift & 24/7 on-site security

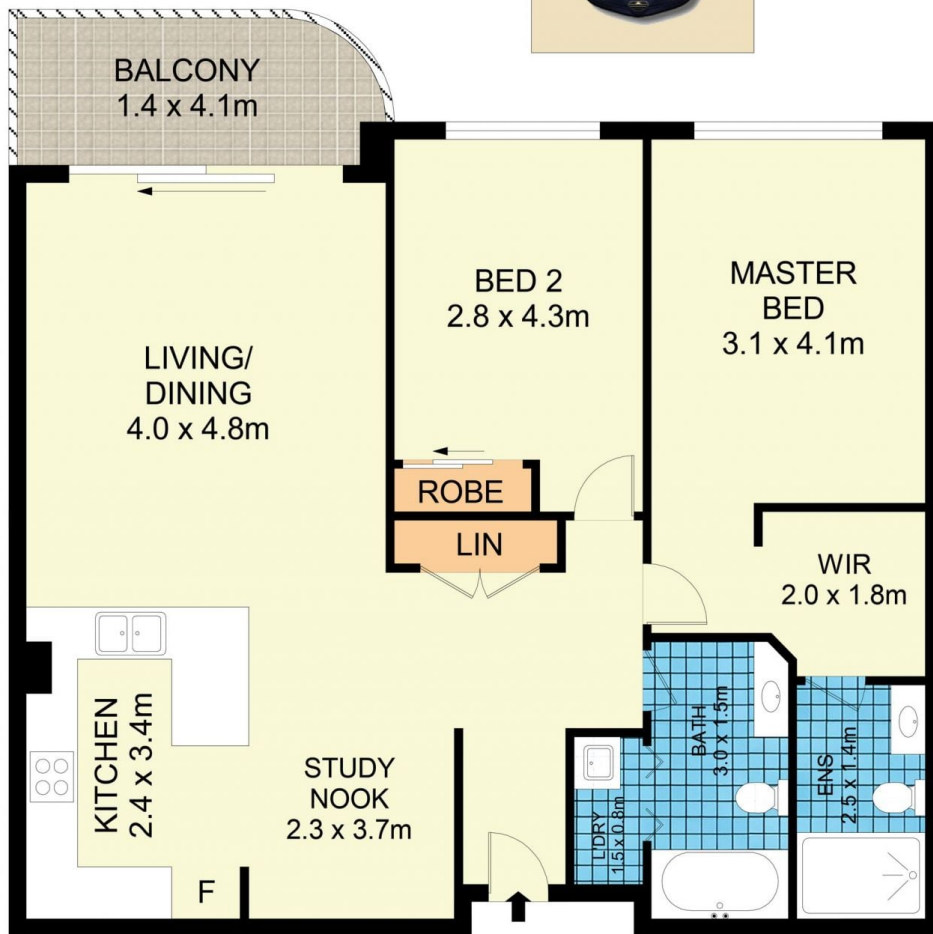
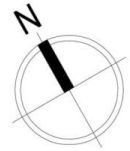
[For full version visit the website](https://www.beaumccaffery.com.au)



Rebecca Voncina
02 9565 5333



Melissah McCaffery J P
02 9565 5333



6408/177-219 Mitchell Road, Erskineville

Disclaimer

Floor Plan measurements are approximate and are for illustrative purposes only. While we cannot doubt the floor plans accuracy, we make no guarantee, warranty or representation as to the accuracy and completeness of the floor plan.