



10206/177-219 Mitchell Road Erskineville NSW

1  1  1 

Set amid the lush green gardens of Sydney Park Village, this impressive one bedroom apartment has a generous floor plan & expansive wrap around entertainer's courtyard. Designed for entertainers, this apartment offers immense privacy w/ a unique statement of scale and wow factor.

Type : Apartment

Price : \$ 700,000

View : <https://www.beaumccaffery.com.au/6474187>

Oversized living & dining area w/ aircon that flows to the wrap around courtyard

Private, low maintenance courtyard ideal for entertaining w/ garden shed & clothes line

Well appointed gas kitchen w/ quality appliances

New floorboards throughout

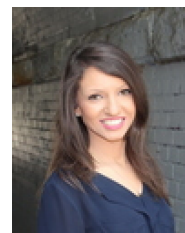
Main bedroom w/ BIR

Renovated bathroom w/ laundry facilities

Secure undercover parking & ample visitor parking



Melissah McCaffery J P
02 9565 5333



Rebecca Voncina
02 9565 5333

[For full version visit the website](https://www.beaumccaffery.com.au)