



**13604/177-219 Mitchell Road Erskineville NSW**

2  2  1 

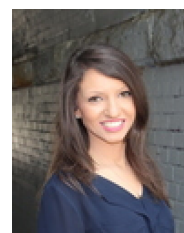
Set within the exclusive Sydney Park Village complex, this two bedroom apartment is located on the top floor, featuring a desirable open plan layout w/ blissful park views from the balcony. Complete with lift access to secure parking and conveniently located only footsteps away to shops, public transport, vibrant village bars and eateries.

**Type** : Apartment  
**Price** : \$ 888,000  
**View** : <https://www.beaumccaffery.com.au/6499658>

Open plan living & dining area w/ air conditioning  
Well appointed gas kitchen w/ s/s appliances  
Covered balcony w/ panoramic park views  
Master bedroom w/ WIR, ensuite & balcony access  
Generous second bedroom w/ BIR  
Main bathroom w/ bathtub & separate laundry  
Secure undercover parking & ample visitor parking  
Security intercom, lift access & 24/7 on-site security

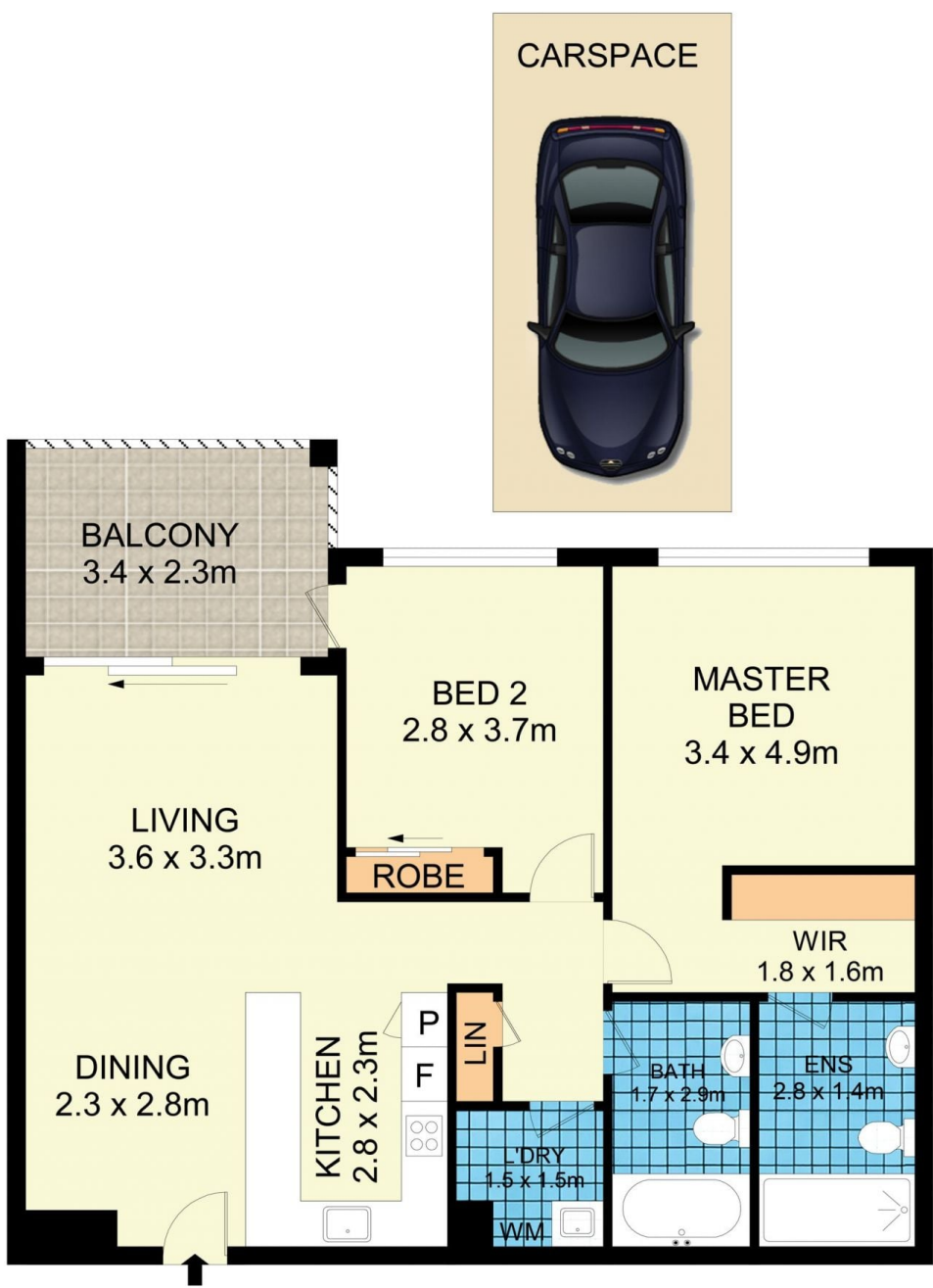
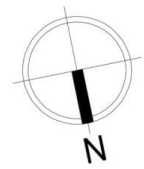


**Michael McCaffery**  
02 9565 5333



**Rebecca Voncina**  
02 9565 5333

[For full version visit the website](https://www.beaumccaffery.com.au)



## 13604/177-219 Mitchell Road, Erskineville

Disclaimer  
Floor Plan measurements are approximate and are for illustrative purposes only. While we cannot doubt the floor plans accuracy, we make no guarantee, warranty or representation as to the accuracy and completeness of the floor plan