






**35/21-25 Coulson Street Erskineville NSW**

2  2  1 

Set within the Star Printery warehouse conversion building, this east facing two bedroom apartment offers a versatile floorplan w/ a generous study room.

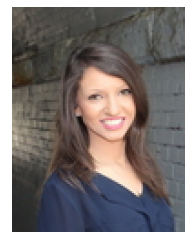
Showcasing light filled interiors and modern appointments, this apartment is suited for those looking for a low maintenance, inner-city lifestyle convenience.

- Spacious open plan living & dining area
- Desirable East facing balcony
- Modern gas kitchen w/ s/s appliances
- Master bedroom w/ BIR & ensuite
- Second bedroom w/ BIR
- Generous study/home office w/ built-in desk
- Modern bathrooms, main w/ tub & separate laundry
- Pet-friendly complex & intercom access

**Type** : Apartment  
**Land Size** : 123 sqm  
**View** : <https://www.beaumccaffery.com.au/6606547>



**Michael McCaffery**  
02 9565 5333



**Rebecca Voncina**  
02 9565 5333

[For full version visit the website](https://www.beaumccaffery.com.au)