



**6503/177-219 Mitchell Road Erskineville NSW**

2  2  1 

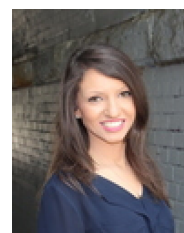
The features of this property make it one of the most desirable in the highly sought after Sydney Park Village. Positioned amongst landscaped gardens & resort style facilities, the home has instant appeal with a spacious open-plan design & crisp interiors. The package is completed with plantation shutters throughout & tree top views from every window.

Open plan living & dining area w/ plantation shutters  
Covered balcony w/ garden views  
Well appointed gas kitchen w/ s/s appliances  
Master bedroom w/ WIR & ensuite  
Second bedroom w/ BIR's  
Main bathroom w/ tub & separate laundry  
Secure undercover parking & ample visitor parking

**Type** : Apartment  
**Price** : \$ 860,000  
**View** : <https://www.beaumccaffery.com.au/6612506>



**Melissah McCaffery J P**  
02 9565 5333



**Rebecca Voncina**  
02 9565 5333

[For full version visit the website](https://www.beaumccaffery.com.au)