

**10505/177-219 Mitchell Road Erskineville NSW**

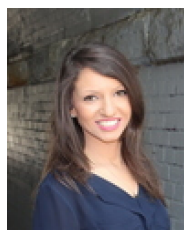
1  1  1 

A desirable inner west address, this one bedroom apartment + study + parking ticks all the boxes. Enjoy low maintenance living coupled w/ resort facilities + lush green surrounds of Sydney Park.

**Type** : Apartment

**View** : <https://www.beaumccaffery.com.au/6641291>

Open plan living & dining area  
Balcony w/ private outlook  
Well-appointed gas kitchen w/ s/s appliances  
Light filled master bedroom w/ BIR  
Separate study area, perfect home office or nursery  
Bathroom w/ laundry facilities  
Secure undercover parking & ample visitor parking  
Intercom, lift access & 24/7 on-site security  
Pet friendly complex  
Strata levies approx. \$1,830/q

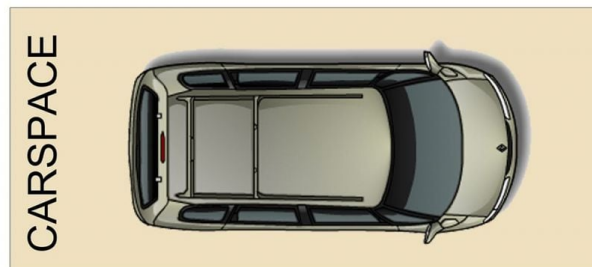
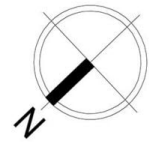


**Rebecca Voncina**  
02 9565 5333



**Melissah McCaffery J P**  
02 9565 5333

[For full version visit the website](https://www.beaumccaffery.com.au)



10505/177-219 Mitchell Road, Erskineville

Disclaimer

Floor Plan measurements are approximate and are for illustrative purposes only. While we cannot doubt the floor plans accuracy, we make no guarantee, warranty or representation as to the accuracy and completeness of the floor plan