



11501/177-219 Mitchell Road Erskineville NSW

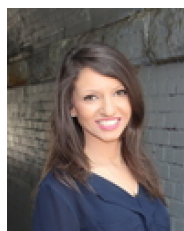
2  2  1 

This North facing two bedroom apartment features a generous floor plan, entertainers balcony w/ desirable internal views of the tennis courts + lush green surrounds of Sydney Park Village.

- Open plan living and dining area
- North facing balcony w/ internal complex views
- Master bedroom w/ walk in robe & ensuite
- Second bedroom w/ built in robe & balcony access
- Well-appointed gas kitchen w/ s/s appliances
- Stylish bathrooms, main w/ tub
- Separate internal laundry
- Secure car space & plenty of storage
- Intercom, lift access & 24/7 on-site security
- Pet friendly complex

[For full version visit the website](https://www.beaumccaffery.com.au)

Type : Apartment
Price : \$ 1,007,000
Building Size : 117 sqm
Land Size : 117 sqm
View : <https://www.beaumccaffery.com.au/6648650>



Rebecca Voncina
02 9565 5333



Michael McCaffery
02 9565 5333