



14607/177-219 Mitchell Road Erskineville NSW

3  2  2 

Positioned in a highly prized setting, this top floor 3 bedroom penthouse is split over 2 levels and has an impressive 157 sqm on title. Recently renovated this apartment features high ceilings, expansive floor to ceiling glass and a grand entertainer's terrace which compliments the magnificent surrounding views of the entire complex + captivating city skyline backdrop. Enjoy low maintenance living coupled w/ exquisite resort style facilities + lush green surrounds.

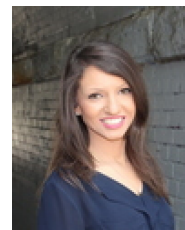
Spacious, light filled open plan living & dining area
Entertainer's terrace w/ desirable complex & city views
Designer gas kitchen w/ stone benchtops & s/s appliances
+ plenty of storage
Master bedroom w/ WIR & chic ensuite

[For full version visit the website](https://www.beaumccaffery.com.au)

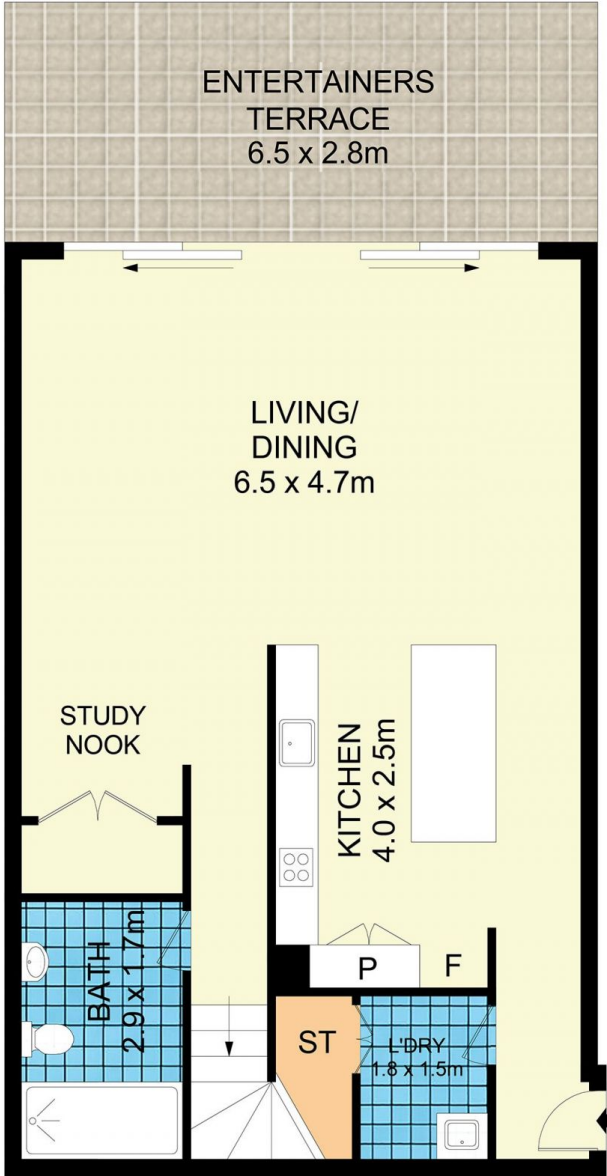
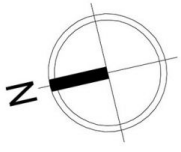
Type : Apartment
Price : \$ 1,955,000
Land Size : 157 sqm
View : <https://www.beaumccaffery.com.au/6649668>



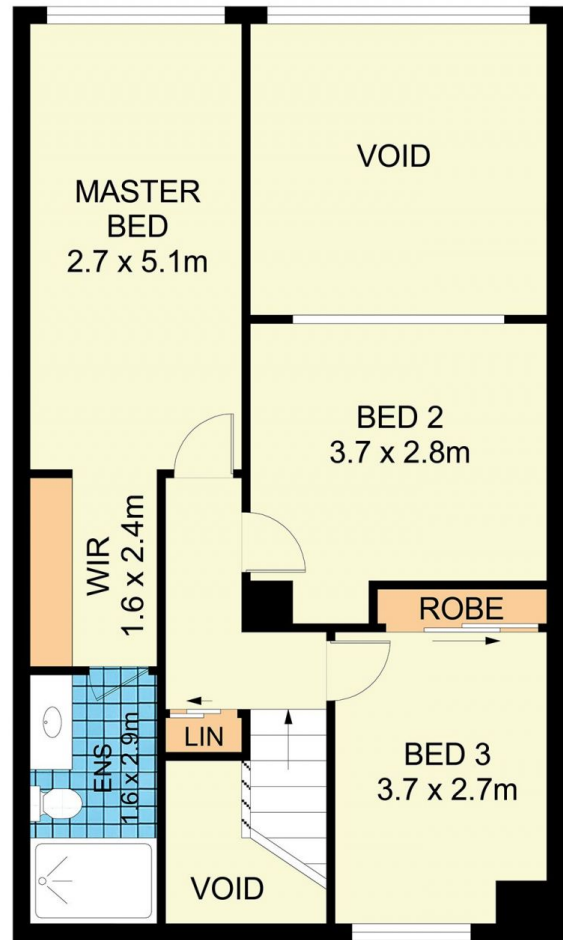
Melissah McCaffery J P
02 9565 5333



Rebecca Voncina
02 9565 5333



ENTRY LEVEL



FIRST LEVEL



14607/177-219 Mitchell Road, Erskineville

Disclaimer

Floor Plan measurements are approximate and are for illustrative purposes only. While we cannot doubt the floor plans accuracy, we make no guarantee, warranty or representation as to the accuracy and completeness of the floor plan.