



3407/177-219 Mitchell Road Erskineville NSW

1  1  1 

This attractive park-side haven delivers the essence of inner-city living within tranquil surrounds. The ideal first home or lucrative investment for the savvy opportunist.

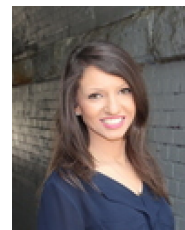
Type : Apartment

View : <https://www.beaumccaffery.com.au/6650427>

Open plan living & dining area
 Covered entertainers' balcony w/ park views
 Well-appointed gas kitchen w/ s/s appliances & plenty of storage
 Spacious light filled master bedroom w/ BIR, ensuite & internal laundry
 Secure car space, intercom, lift access & 24/7 on-site security
 Pet friendly complex



Melissah McCaffery J P
02 9565 5333



Rebecca Voncina
02 9565 5333

Sitting on the fringe of Sydney's inner west and inner city,

[For full version visit the website](https://www.beaumccaffery.com.au)