



6205/177-219 Mitchell Road Erskineville NSW

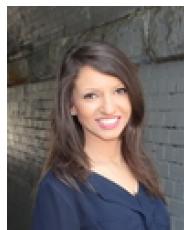
2  2  1 

Set within the exclusive Sydney Park Village complex, this North facing two bedroom apartment features a versatile open plan layout w/ desirable views overlooking the inspiring landscaped gardens. Enjoy the utmost convenience + vibrant lifestyle in a prized inner city location.

Type : Apartment
Price : \$ 900,000
Land Size : 99 sqm
View : <https://www.beaumccaffery.com.au/6659783>

Spacious, open plan living & dining area
 North facing balcony w/ desirable garden views
 Well-appointed gas kitchen w/ appliances
 Two double bedrooms, main w/ WIR & en-suite
 Main bathroom w/ bathtub & internal laundry facilities
 Security intercom, secure basement parking via lift & 24/7 on-site security
 Moments to cafes, Sydney Park & transport

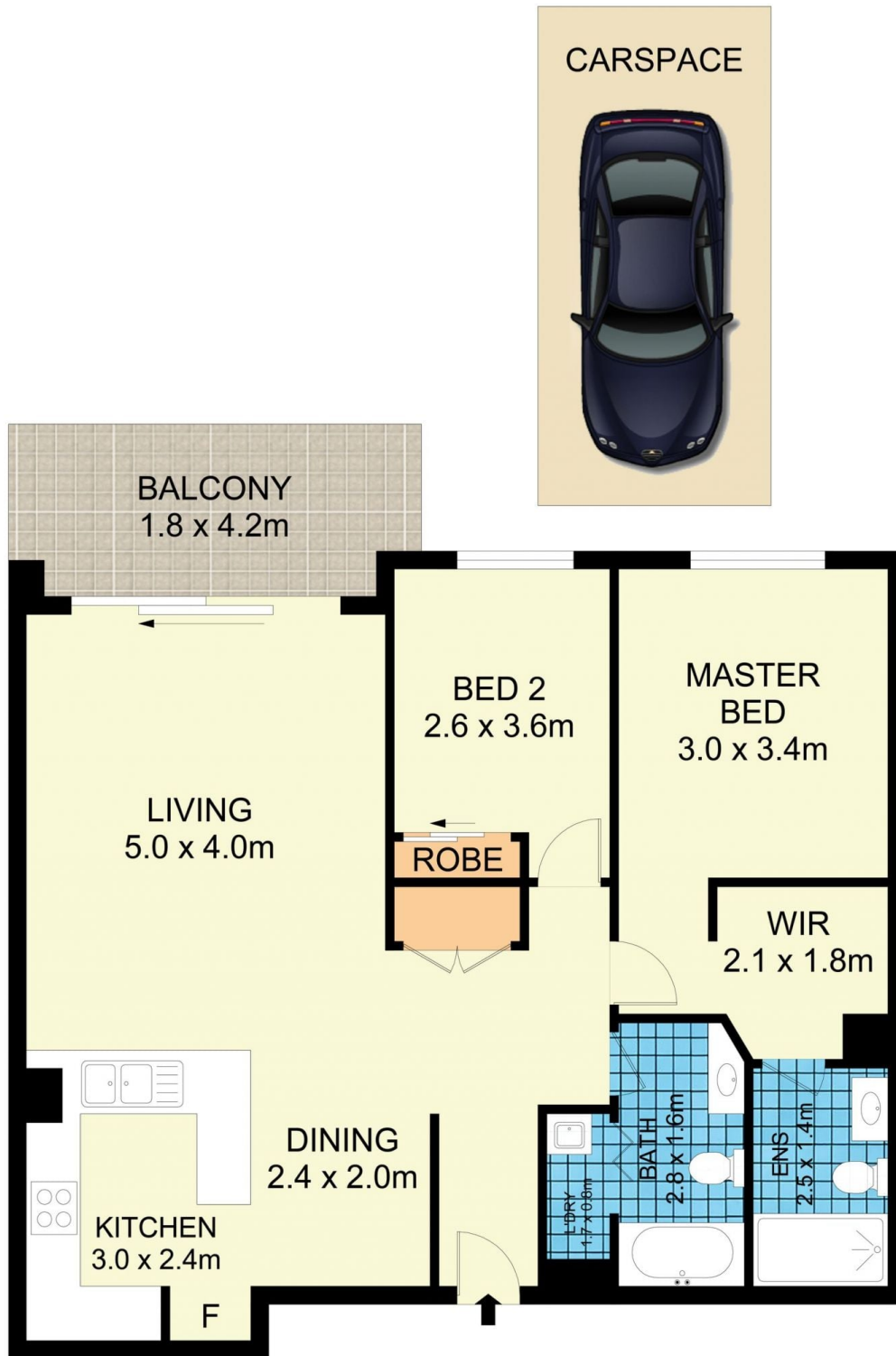
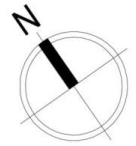
[For full version visit the website](https://www.beaumccaffery.com.au)



Rebecca Voncina
02 9565 5333



Melissah McCaffery J P
02 9565 5333



6205/177-219 Mitchell Road, Erskineville

Disclaimer

Floor Plan measurements are approximate and are for illustrative purposes only. While we cannot doubt the floor plans accuracy, we make no guarantee, warranty or representation as to the accuracy and completeness of the floor plan