




**5203/177-219 Mitchell Road Erskineville NSW**

2  2  1 

Under Offer

Open for Inspections Cancelled

Nestled amid the oasis-like gardens of Sydney Park Village, this generous courtyard apartment has a versatile floorplan, featuring new floorboards in the living/dining area, air conditioning & updated interiors throughout - with nothing to do, just move straight in and indulge in the array of resort-style facilities, restaurants, cafes and Sydney Park right on your doorstep.

Open plan living & dining area w/ air-con & floorboards  
Generous entertainers courtyard  
Well-appointed gas kitchen w/ s/s appliances  
Master bedroom w/ WIR & en-suite  
Second bedroom w/ BIR & courtyard access

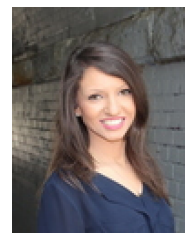
**Type** : Apartment

**Price** : \$ 930,000

**View** : <https://www.beaumccaffery.com.au/6679448>



**Michael McCaffery**  
02 9565 5333



**Rebecca Voncina**  
02 9565 5333

[For full version visit the website](https://www.beaumccaffery.com.au)