

16311/177-219 Mitchell Road Erskineville NSW

1  1  1 

This impressive renovated apartment is located in the popular stand alone "Clifton Green" building and has a total of 92 sqm on title. Featuring a versatile floor plan w/ desirable internal views of the tennis courts, renovated interiors and generous outdoor space. Enjoy resort style living, a variety of dining options/cafes to choose from and the convenience of Sydney Park right across the road.

Type : Apartment
Price : \$ 820,000
Land Size : 92 sqm
View : <https://www.beaumccaffery.com.au/6686099>

Generous open plan living & dining area w/ air-conditioning

Entertainers balcony w/ desirable internal views

Spacious master bedroom w/ WIR & balcony access

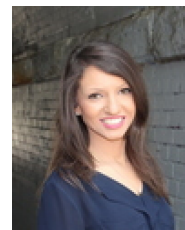
Renovated gas kitchen w/ s/s appliances & plenty of storage

Renovated bathroom w/ tub & laundry facilities

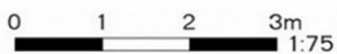
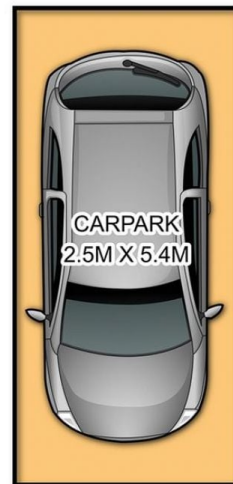
[For full version visit the website](https://www.beaumccaffery.com.au)



Michael McCaffery
02 9565 5333



Rebecca Voncina
02 9565 5333



16311 / 177-219 Mitchell Road, Erskineville

DISCLAIMER: SYDRealEstatePhoto accepts no liability for the accuracy of details contained within our floor plans. The plan scale in meters. Indicative only. Dimensions are approximate. All information contained here in is gathered from sources we believe to be reliable. However we cannot guarantee its accuracy and interested persons should rely on their own enquiries.