

9312/177-219 Mitchell Road Erskineville NSW

1  1 

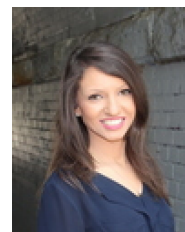
Set in the desirable resort style complex Sydney Park Village, this immaculate apartment features an impressively large living/dining & oversized bedroom, showcasing light filled interiors + updates throughout - take advantage to either occupy or invest in this lucrative opportunity.

Type : Apartment
Building Size : 77 sqm
Land Size : 77 sqm
View : <https://www.beaumccaffery.com.au/6698022>

Open plan living & dining area w/ internal views over the complex leafy grounds
 Modern gas kitchen w/ quality appliances (no separate gas bill in this strata plan)
 Generous master bedroom w/ BIR & leafy outlook
 Renovated bathroom w/ tub & separate laundry
 New paint, new flooring, new downlights
 Secure undercover parking (leasehold, not on title) & ample visitor parking

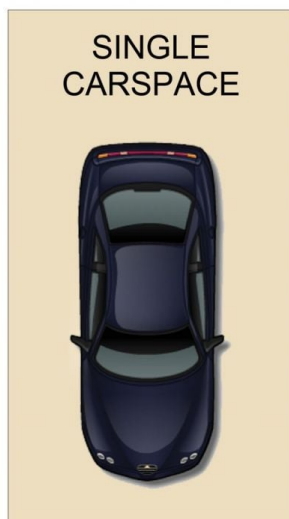


Melissah McCaffery J P
02 9565 5333



Rebecca Voncina
02 9565 5333

[For full version visit the website](https://www.beaumccaffery.com.au)



(NOT TO SCALE)



9312/177-219 Mitchell Road, Erskineville



Disclaimer

Floor Plan measurements are approximate and are for illustrative purposes only. While we cannot doubt the floor plans accuracy, we make no guarantee, warranty or representation as to the accuracy and completeness of the floor plan