

14508/177-219 Mitchell Road Erskineville NSW

1  1  1 

Offering sophistication & tranquillity amid Erskineville's vibrant lifestyle precinct, this contemporary haven is nestled within the acclaimed Sydney Park Village complex promises an idyllic urban lifestyle.

Type : Apartment

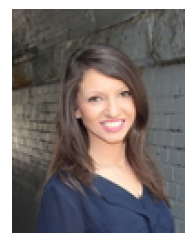
Price : \$ 760,000

View : <https://www.beaumccaffery.com.au/6730697>

Large open plan lounge & dining area
Designer gas kitchen w/ stainless steel appliances
Generous bedroom w built-in robes & balcony access
Stylish bathroom w/ tub & internal laundry w dryer
Secure car space & ample visitor parking
Strata levies approx. \$1650/q



Melissah McCaffery J P
02 9565 5333



Rebecca Voncina
02 9565 5333

[For full version visit the website](https://www.beaumccaffery.com.au)