



**2309/8 Eve Street Erskineville NSW**

1  1  1 

Designed by architects Allen Jack + Cottier, this immaculate apartment located in the award-winning 'Motto' complex showcasing light filled interiors, floor to ceiling glass & lush green outlook to the gardens & pool create in/outdoor flow from every room. Featuring the added extras of a custom inbuilt study, automatic roller blinds + surrounded by pocket parks, cafes & pathway access to Sydney Park. East facing & refreshed throughout, it's move-in ready - enjoy the community lifestyle & walk everywhere convenience.

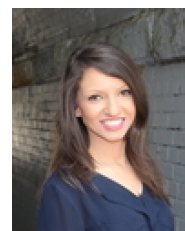
Open plan living & dining area w/ floor to ceiling glass, air-conditioning & custom cabinetry  
East facing balcony w/ desirable internal garden & pool views

[For full version visit the website](https://www.beaumccaffery.com.au)

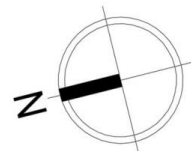
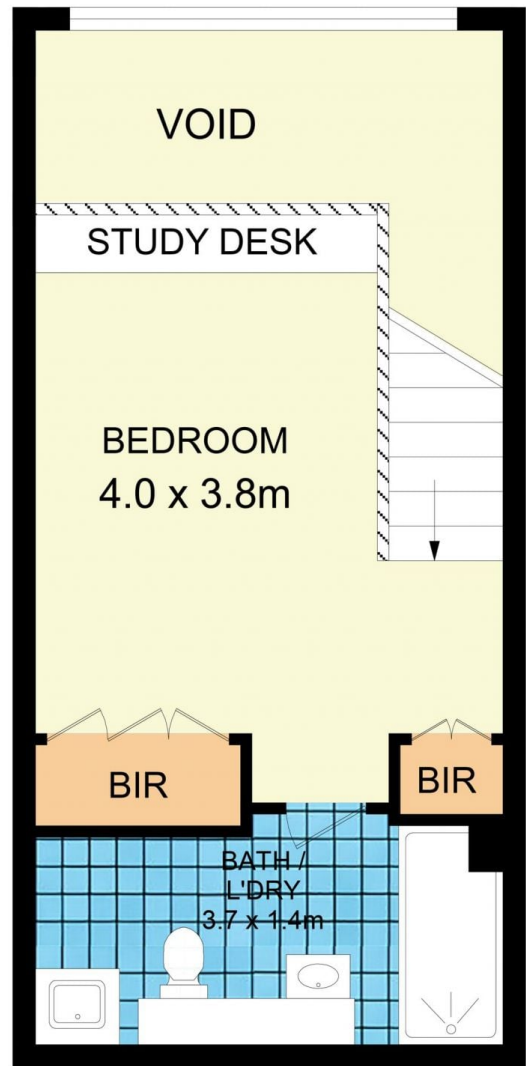
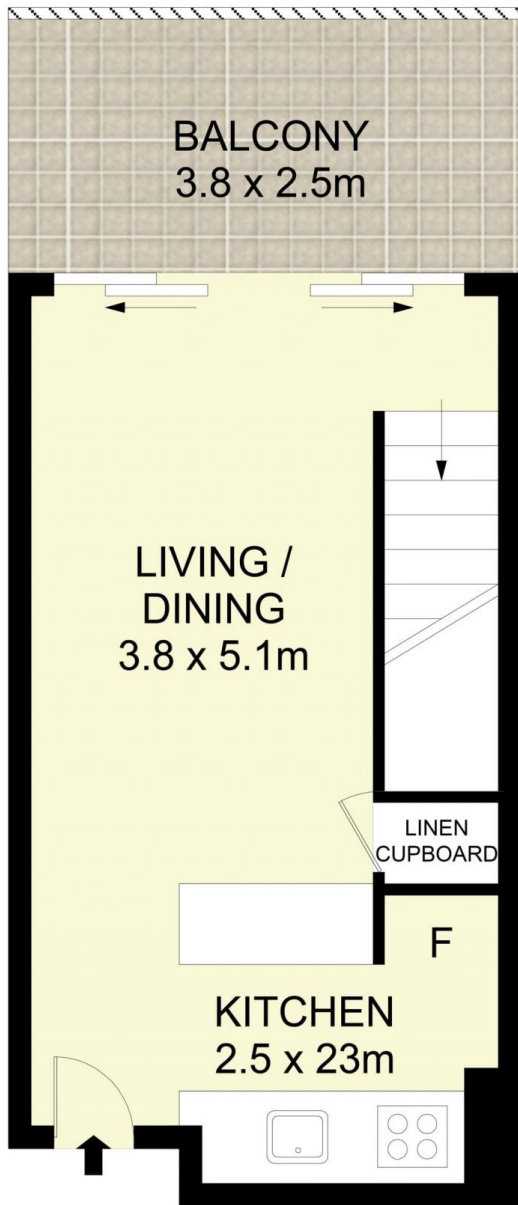
**Type** : Apartment  
**Price** : \$ 830,000  
**Building Size** : 74 sqm  
**Land Size** : 74 sqm  
**View** : <https://www.beaumccaffery.com.au/6731351>



**Melissah McCaffery J P**  
02 9565 5333



**Rebecca Voncina**  
02 9565 5333



2309/8 Eve Street, Erskineville

Disclaimer

Floor Plan measurements are approximate and are for illustrative purposes only. While we cannot doubt the floor plans accuracy, we make no guarantee, warranty or representation as to the accuracy and completeness of the floor plan