



**9508/177-219 Mitchell Road Erskineville NSW**

1  1  1 

Peacefully situated on the East corner of the complex, this tastefully renovated apartment features a corner position with only one common wall, large wrap-around balcony & private views from every room. Situated in the impressive resort style complex Sydney Park Village, take advantage to either occupy or invest in this lucrative entry level opportunity.

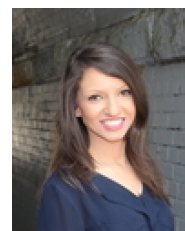
**Type** : Apartment  
**Price** : \$ 700,000  
**Building Size** : 80 sqm  
**Land Size** : 80 sqm  
**View** : <https://www.beaumccaffery.com.au/6747473>

Open plan living/dining area w/ study nook & air con  
 Large wrap around balcony w/ district & city views  
 Updated gas kitchen w/ quality appliances (no separate gas bill in this strata plan)  
 Generous master bedroom w/ BIR  
 Renovated bathroom w/ tub & laundry facilities  
 New paint, new flooring, new lighting

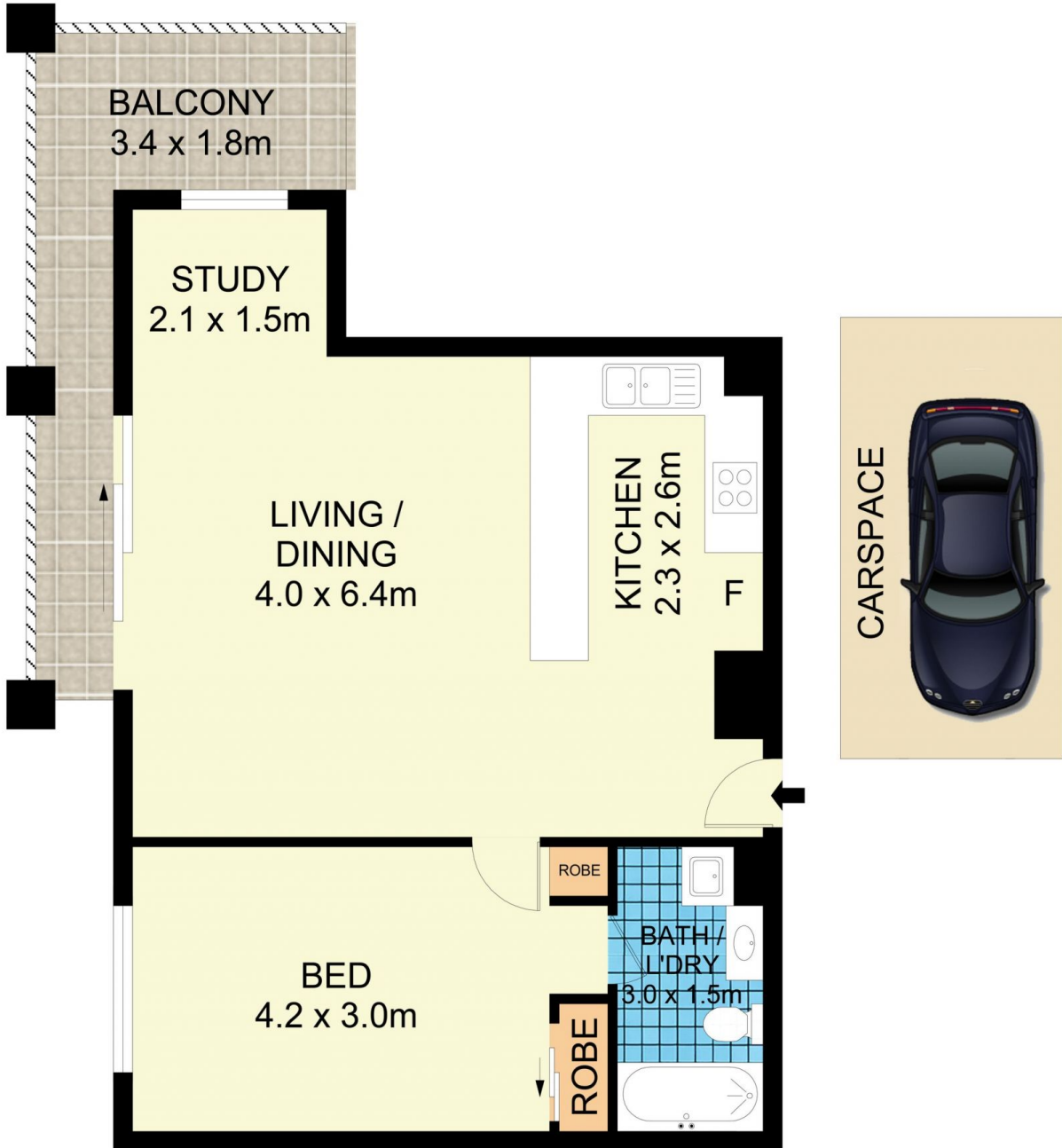
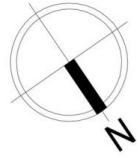
[For full version visit the website](https://www.beaumccaffery.com.au)



**Melissah McCaffery J P**  
02 9565 5333



**Rebecca Voncina**  
02 9565 5333



9508/177-219 Mitchell Road, Erskineville

Disclaimer

Floor Plan measurements are approximate and are for illustrative purposes only. While we cannot doubt the floor plans accuracy, we make no guarantee, warranty or representation as to the accuracy and completeness of the floor plan