



**9311/177-219 Mitchell Road Erskineville NSW**

1  1  1 

Nestled amid the oasis-like gardens + resort style enclave of Sydney Park Village, this luxe apartment captures the essence of inner-city living. Featuring an open plan layout w/ updated + light filled interiors that emphasise space & inspires an effortless lifestyle in a serene resort-style sanctuary. Indulge in the array of onsite facilities and explore the eclectic dining and nightlife hubs of Erskineville, Alexandria and Newtown right on your doorstep - the perfect inner west home or savvy investment opportunity.

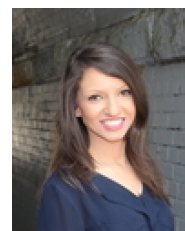
Open plan living w/ air con leads to the internal facing entertainer's balcony overlooking the manicured gardens  
Master bedroom w/ mirrored BIR  
Well-appointed gas kitchen w/ s/s appliances & plenty of storage

[For full version visit the website](https://www.beaumccaffery.com.au)

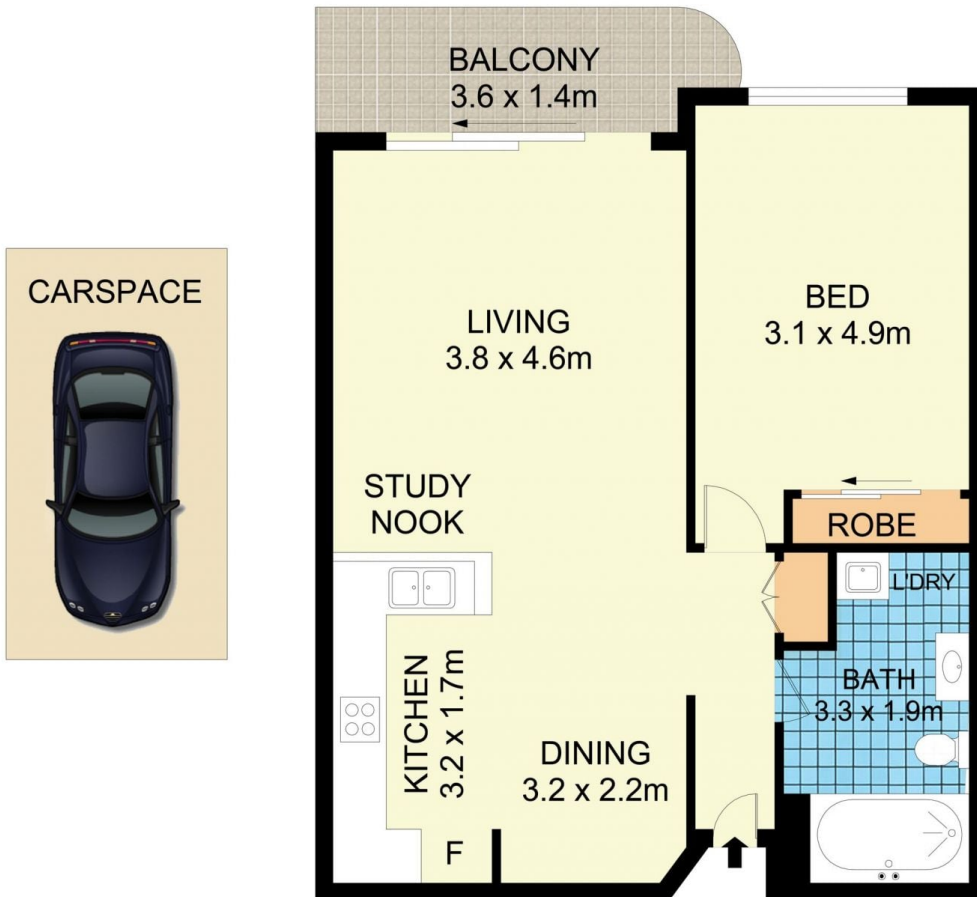
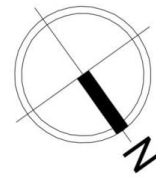
**Type** : Apartment  
**Price** : \$ 640,000  
**Building Size** : 75 sqm  
**Land Size** : 75 sqm  
**View** : <https://www.beaumccaffery.com.au/6809237>



**Melissah McCaffery J P**  
02 9565 5333



**Rebecca Voncina**  
02 9565 5333



9311/177-219 Mitchell Road, Erskineville



**Disclaimer**

Floor Plan measurements are approximate and are for illustrative purposes only. While we cannot doubt the floor plans accuracy, we make no guarantee, warranty or representation as to the accuracy and completeness of the floor plan.