

9208/177-219 Mitchell Road Erskineville NSW

1  1 

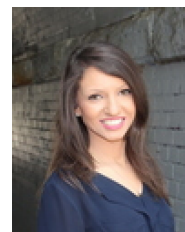
Positioned on the second floor & situated in the impressive resort style complex Sydney Park Village, this West facing apartment overlooks the gardens & grounds whilst being surrounded by cafes, pocket parks & nightlife - enjoy the community lifestyle & walk everywhere convenience.

Type : Apartment
Building Size : 67 sqm
Land Size : 67 sqm
View : <https://www.beaumccaffery.com.au/6842932>

Open plan living & dining w/ air con & study nook
 Gas kitchen w/ plenty of storage
 Covered East facing balcony overlooking the manicured gardens
 Master bedroom w/ mirrored BIR
 Bathroom w/ tub & laundry facilities
 Updated paint & carpet
 Intercom access, lift access, 24 hour on-site security, pet friendly complex

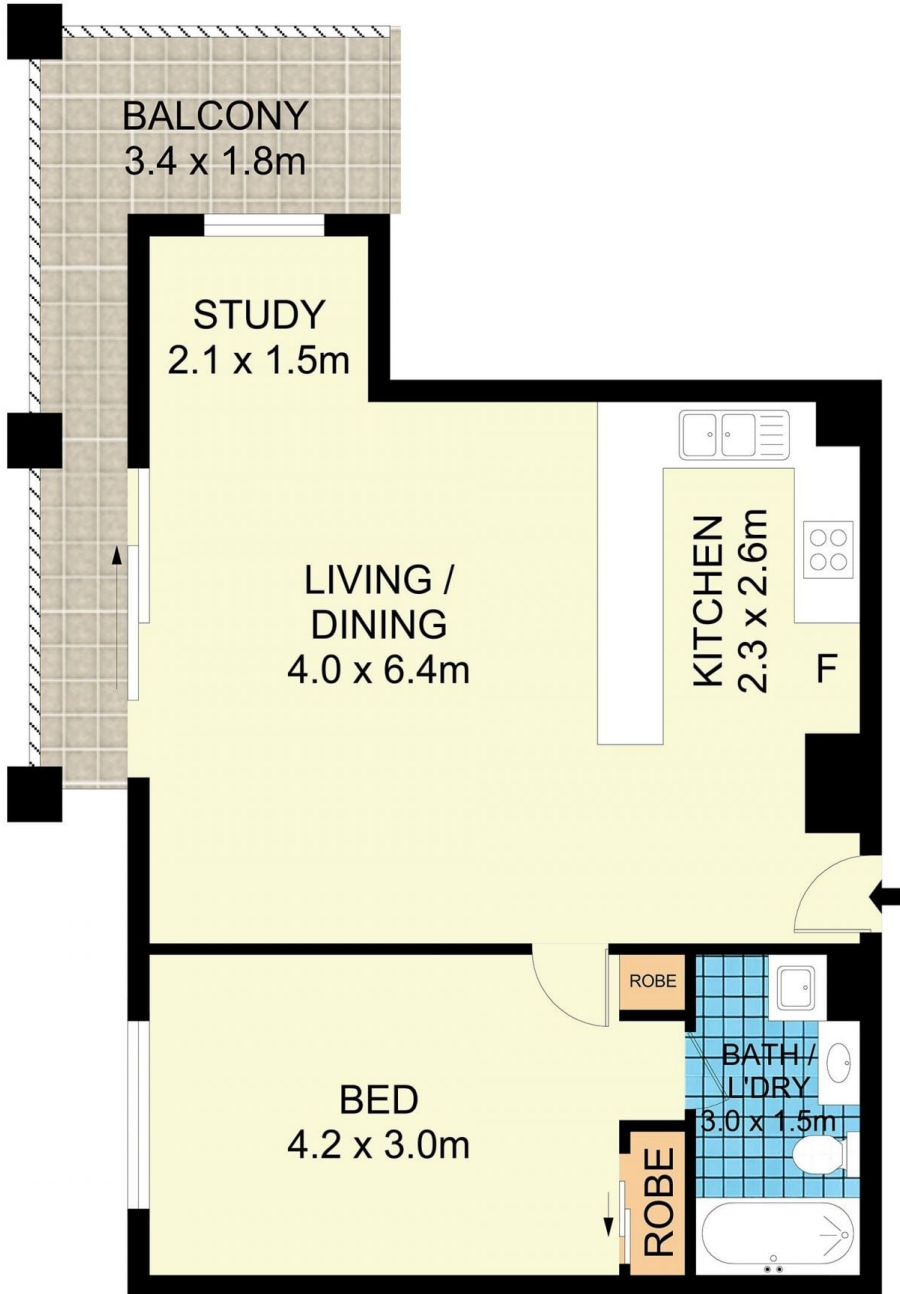
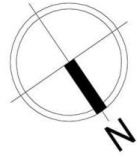


Melissah McCaffery J P
02 9565 5333



Rebecca Voncina
02 9565 5333

[For full version visit the website](https://www.beaumccaffery.com.au)



9208/177-219 Mitchell Road, Erskineville

Disclaimer

Floor Plan measurements are approximate and are for illustrative purposes only. While we cannot doubt the floor plans accuracy, we make no guarantee, warranty or representation as to the accuracy and completeness of the floor plan.